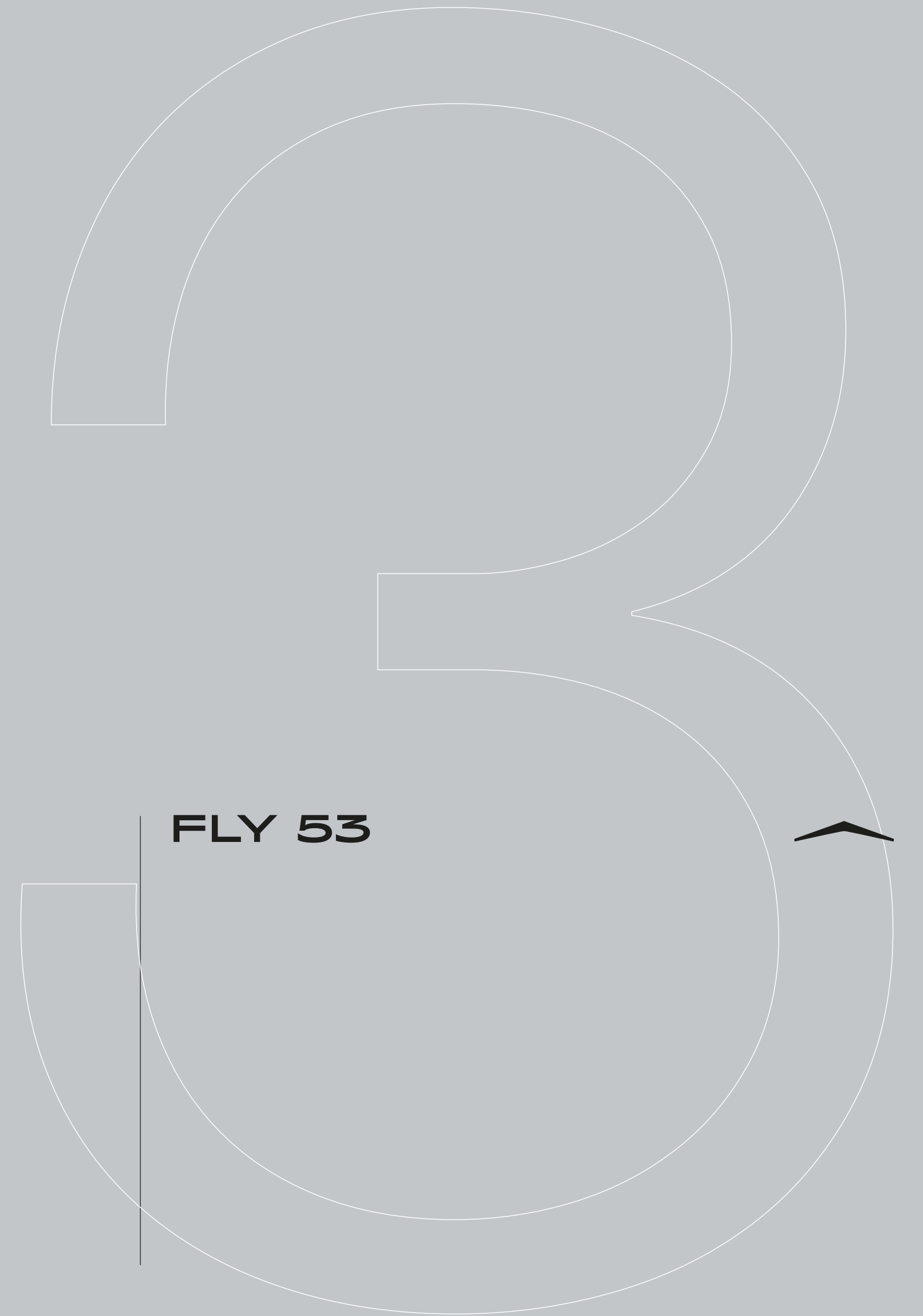


^ZIMUT



INDEX

01	THE DESIGN & LIFESTYLE ON BOARD	P04
02	HER MAIN TECHNICAL FEATURES	P30
03	FLY 53 SPEC SHEET	P34
04	THE FLY SERIES	P39
05	ABOUT AZIMUT	P41



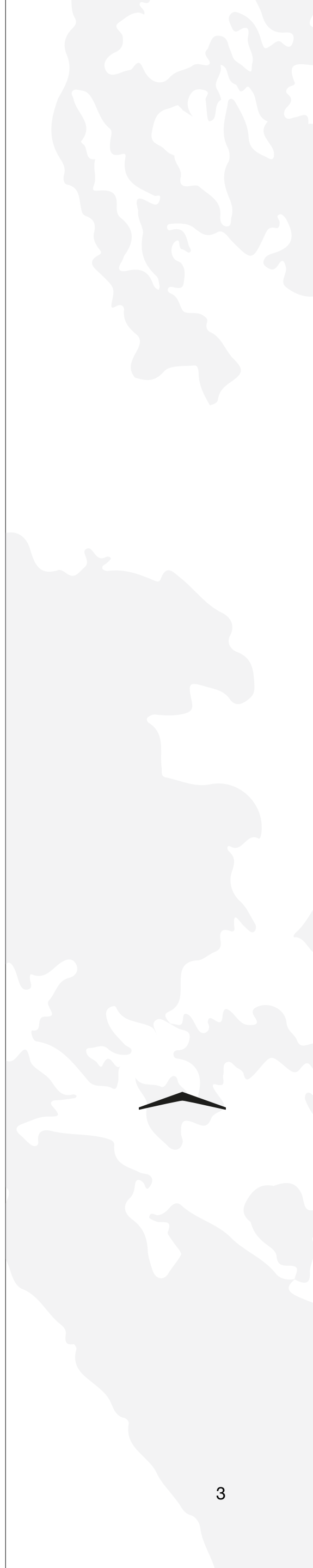
A one-of-a-kind beauty, enrapturing, that steals your breath away, leaving you speechless. An extraordinary idea as the only possible pathway, to get to where you want, to explore, to go beyond.


The freedom of embracing the unknown, that you know you'll love as a part of your very own story. A thought that provokes your mind and then inspires you to aim for the impossible, making mistakes, yet being brave.

A magic je ne sais quoi that enchants and intrigues you, moving you to feel more and to sense uniqueness.

The choice to risk it all, the one that makes you go for it, to impress yourself and all those who are worth it.

Welcome to Azimut.





01

THE DESIGN & LIFESTYLE ON BOARD

FLY 53, A SPACESENSUAL DESIGN ICON

The airy ambience summons a sudden feeling of freedom on the Fly 53, well matched with the dynamic modern family's search for new horizons. Elegantly curated and comfort-calling areas cultivate a serene sense of well-being, giving space and style a whole new meaning. Voyagers of all ages can move effortlessly throughout the full-height interiors, all the while enjoying a privileged perspective on the sea.

Liberate your lifestyle on board the Fly 53.





Welcome aboard ladies and gentlemen.

Let us begin the tour.



SHE IS LIGHT ON THE WATER





[Dark fashion plates almost merge with the windows, reborn to enhance lightness.]

Alberto Mancini penned sleek, slimming lines for the Fly 53 to keep the secret of her generous interior volumes. The flybridge is wrapped in a glazed negative band that widens toward the stern, lifting the fly until it appears to take off by itself. Adding to the effect, the fashion plates are minimal and dark, expanding the uncapped windows. The sheer line underscores it all, shooting up like an arrow, creating dynamic tension towards the bow.

AN ENVELOPING MARINE EXPERIENCE

The Fly 53 strives to balance exposure and comfort, sun and shade, like sea and sky. Marine nature takes center stage, driving the experience, with the support of the perfect accoutrements provided on board. It's the dream escape.







[The open-air lounge area on the foredeck features a front-facing sofa and sunbeds for three, tantalizing in their exaggerated shape, thickness and size]



[The exterior décor is a testament to elegance in a game of innovative geometries, suspended shapes and subdued colors. The flybridge appears to float in mid-air, while the chamfered contours introduce the language of automotive design into yachting culture]

YOUR PERFECT SPOT, ON TOP OF THE WORLD



Reclining backrests transform the bow sunbeds into plush chaise lounges that look towards the stern, facilitating conversation between the owner-captain and guests. The tinted windshield wraps around the whole area, which can therefore be enjoyed even under way. Services comes by way of a central bar cabinet.



An all-compassing lounge over the waves occupies the flybridge's aft half, set around a convertible coffee table for dreamy rooftop dining. The owner may choose to shade this area with an electro-hydraulic bimini or a carbon fiber laminated hardtop.





THE WONDER OF SIMPLE PLEASURES

The cockpit is designed with space and convenience in mind. The asymmetrical transom keeps efficient footpaths, while extending the cockpit table and seating. The new size adds an extra dimension of comfort to the sheltered seaside spot, which features a bar cabinet with a sink, an ice maker and two bottle chillers. The galley fridge is thoughtfully stationed within reach.



WIDE OPEN INTERIORS



DESIGNED TO WELCOME

An environment devoid of reflections, sharp corners or hard colors has a powerful impact on the mind. The design supports relaxation and wellbeing, with unmistakable character, always discretely elegant. Adding a tactile friendliness to each of the pieces, the selection of materials is well matched: light brushed oak, natural fabrics and a tasteful touch of matte bronze accents.





The main deck is a unique, large and wide-ranging area, laid out nearly flush for a full-length airy feeling. The elongated windows further enhance the perception of space, maximizing natural light and views. The galley is located aft at the entry to serve both indoor and outdoor social areas with ease.



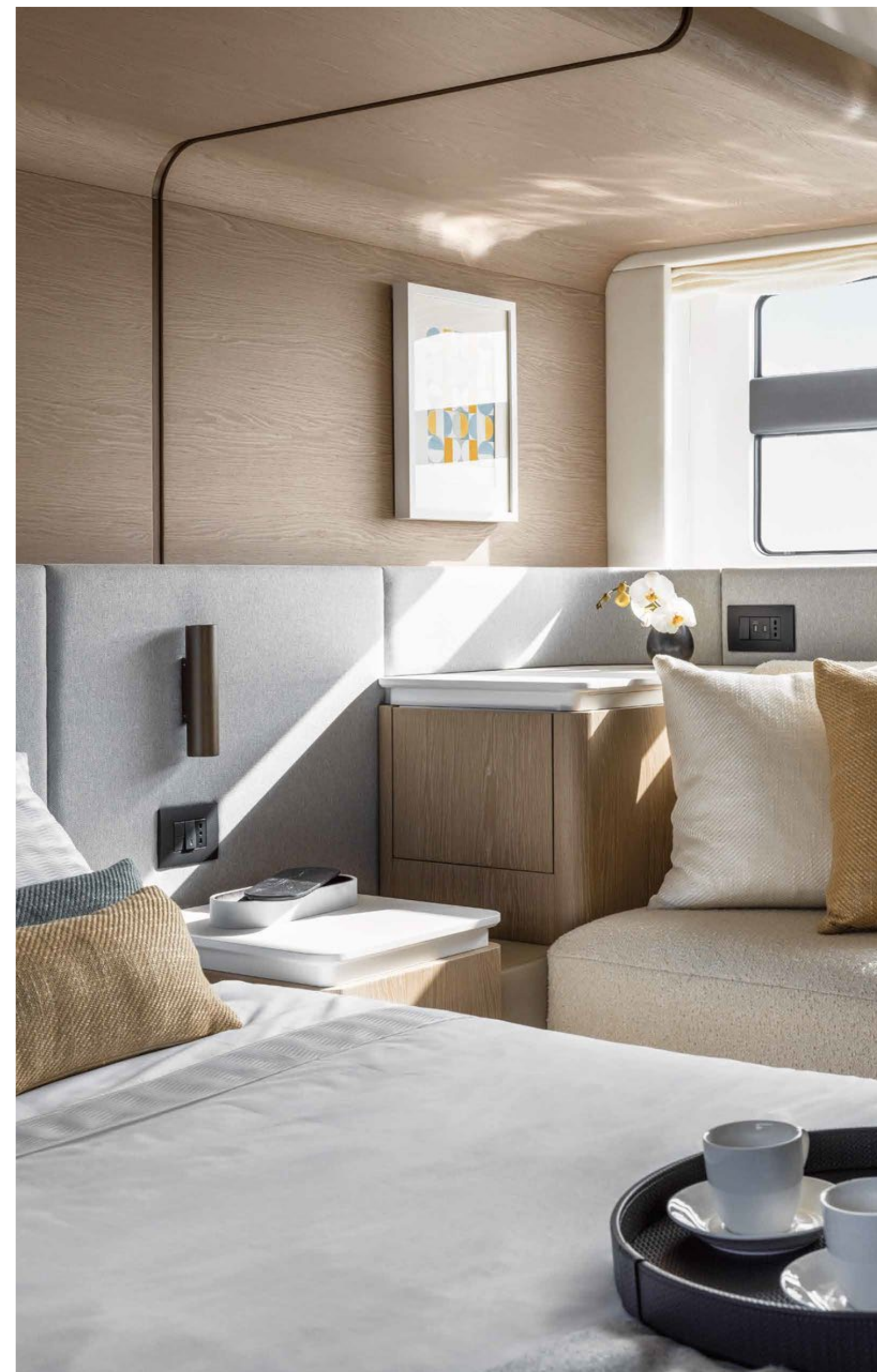
Now, let us discover the guest accommodations.

Shall we?





[The master stateroom amidships is wide and bright, with full-height walking room all the way around the bed.]

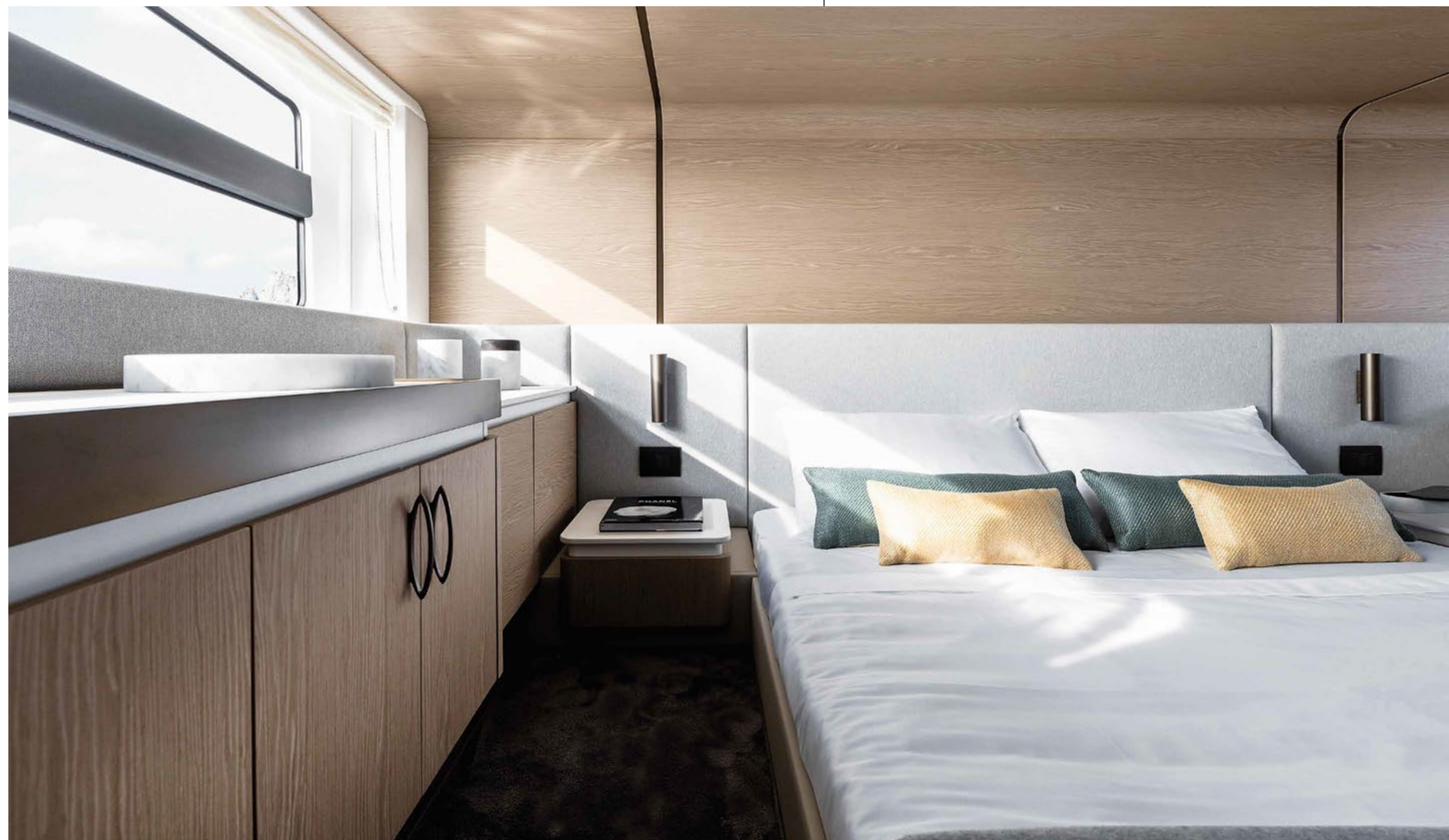


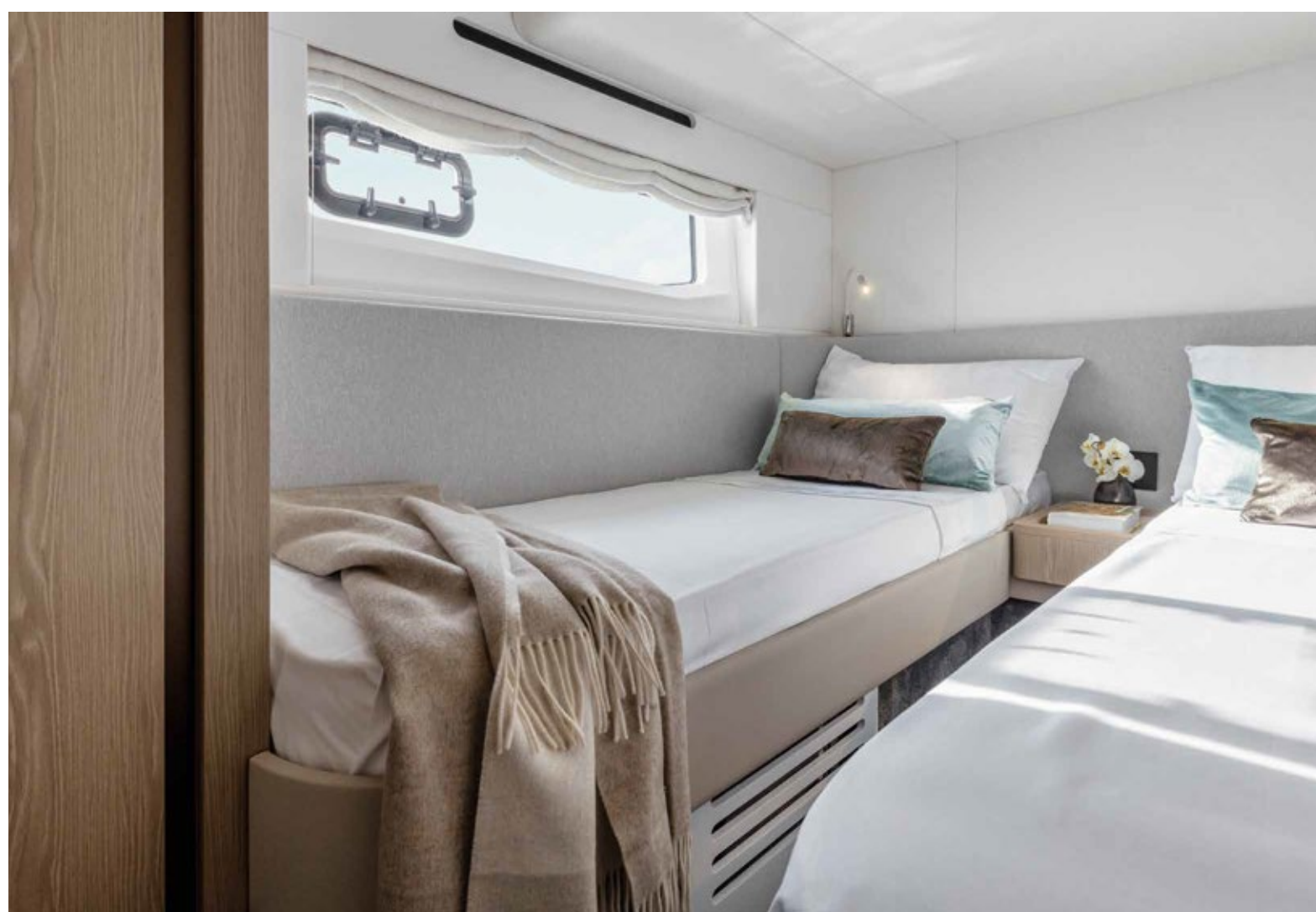


[The choice to install Volvo IPS propulsion means a compact engine room, leaving more space to the accommodations.]



[The storage spaces in the Owner's suite provide for long cruising in comfort, including a walk-in closet, a second storage column and a long row of cabinets along the starboard hull side, plus additional space, as is found under every bed onboard, for bulkier objects.]







[The control and monitoring system by Garmin has been customized to integrate the engines, alarms and tanks into their suite of helpful tools. The system can be accessed from both helm stations and remotely from a tablet.]







02

HER MAIN TECHNICAL FEATURES

The beauty of the Fly 53 is not solely a matter of exterior and interior design elements that combine to perfectly play out Azimut's essence.

Her beauty is also about discovering the technological advancements and special components that contribute to making her truly unique and highly innovative.



ACTIVE TRIM CONTROL


Automated interceptors optimize the trim at every speed to maintain ideal hydrodynamics for performance and efficiency, at the same time negating any lateral imbalance due to sidewinds or weight distribution. With the pilot's peace of mind assured, the driving experience is simpler and more enjoyable.



JOYSTICK DRIVING

The Joystick acts as an analog for the yacht, offering intuitive, one-handed control in every situation. When the yacht is stopped, moving the Joystick forward or back, side to side, and twisting clockwise or counter-clockwise activates the engines to mimic that motion. It's the easiest way to pull off precise maneuvers. When Joystick Driving is activated, the autopilot is immediately engaged. For easy course correction, the driver may briefly twist the Joystick for 1 degree in that direction or twist and hold for 10 degrees. The Autopilot keeps a forward course after the Joystick is released.





03

FLY 53

SPEC SHEET

GENERAL CHARACTERISTICS

LENGTH OVERALL (INCL. PULPIT)	16,78 m	55' 1"
BEAM MAX	4,95 m	16' 3"
DRAFT	1,41 m	4' 8"
DISPLACEMENT	26,82 t	66138 lb
ENGINES	2 x Volvo IPS 950 D11 725 hp	
MAXIMUM SPEED	up to 31 kn	
CRUISING SPEED	up to 26 kn	
KEEL	Planing, aft deadrise: 13.6° - hull center deadrise: 16.8°	
FUEL CAPACITY	2400 l	634 US Gal
WATER CAPACITY	590 l	156 US Gal
CABINS	3 + 1*	
BERTHS	6 + 1*	
HEAD COMPARTMENTS	2 + 1*	
BUILDING MATERIAL	GRP	
EXTERIOR DESIGNER	Alberto Mancini	
INTERIOR DESIGNER	Azimut Yachts	
HULL DESIGNER	Azimut R&D Department in collaboration with MICAD	
BUILDER	Azimut Yachts	
CERTIFICATIONS	CE B; NMMA	

Last updated 08.2022
Please consult your dealer for the latest specifications.

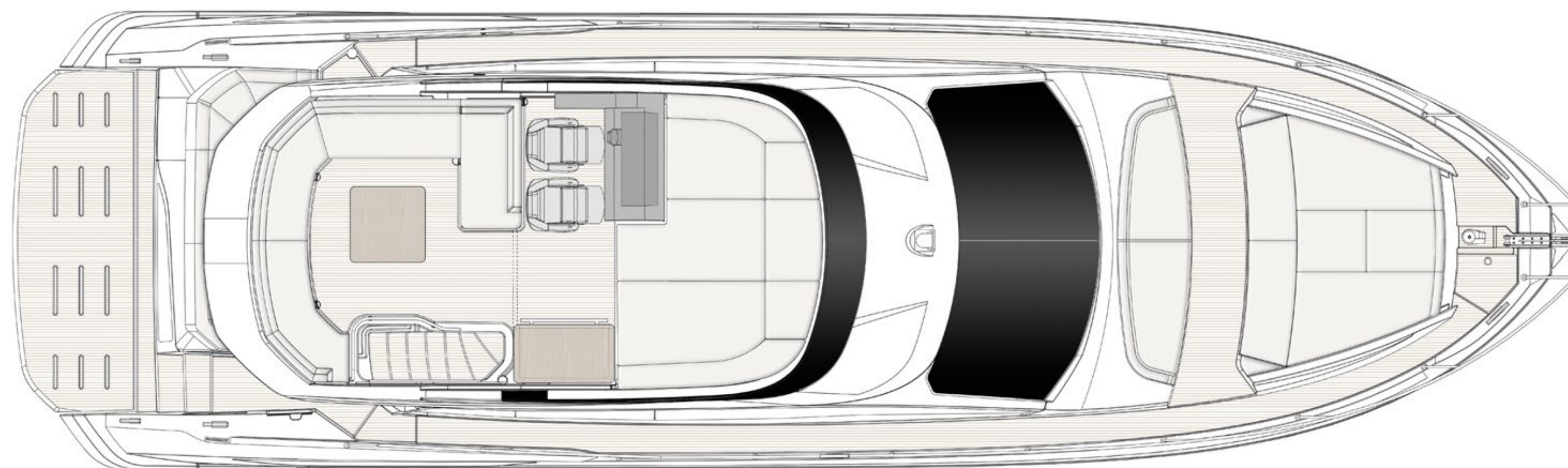
UNI ISO 8666

The performance described applies to a vessel with standard configuration (standard equipment installed) and a clean hull, propellers, and rudder. It is also noted that the performance described was recorded under favourable sea and wind conditions (Beaufort scale index 1, Douglas scale index 1); different and worse sea conditions could significantly impact performance.

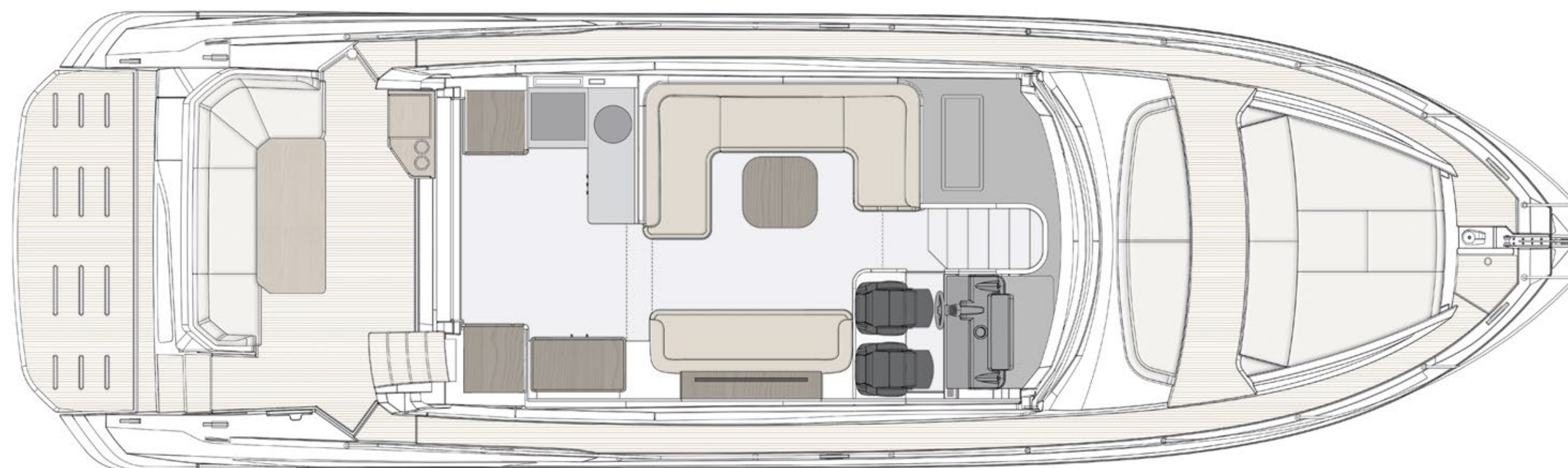
CE MARK

Given the continual evolution of technology, Azimut | Benetti S.p.A reserves the right to modify the technical specifications on its vessels at any time and without prior notice.

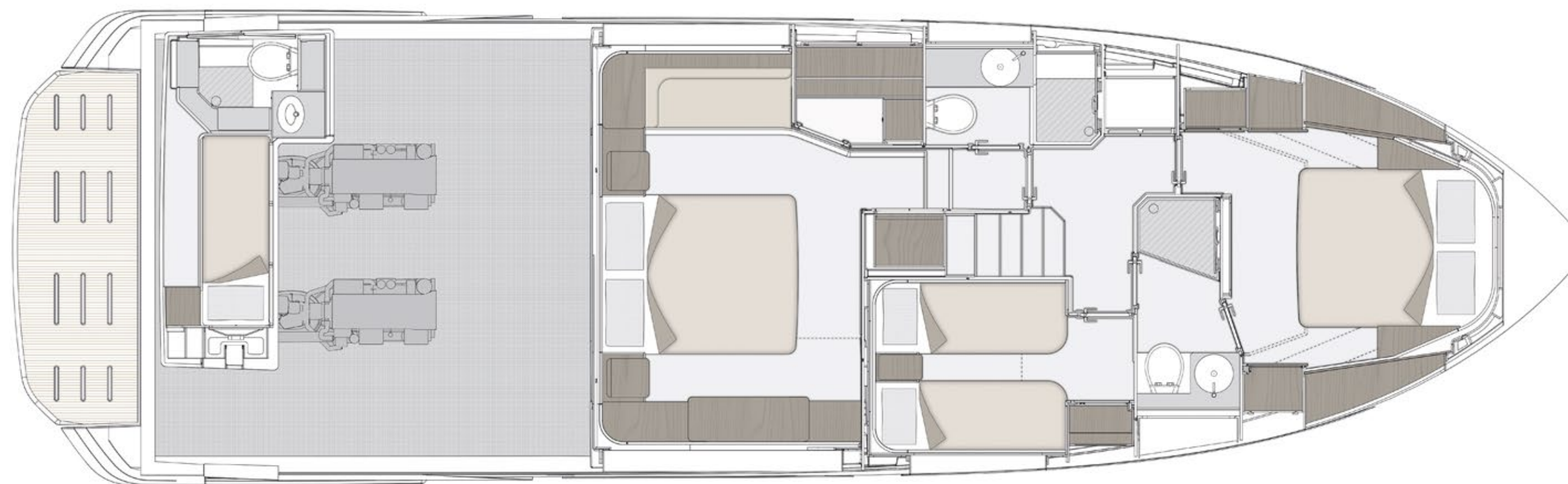
FLYBRIDGE



MAIN DECK



LOWER DECK





04

THE FLY SERIES

A VISUALLY IMMERSIVE EXPERIENCE

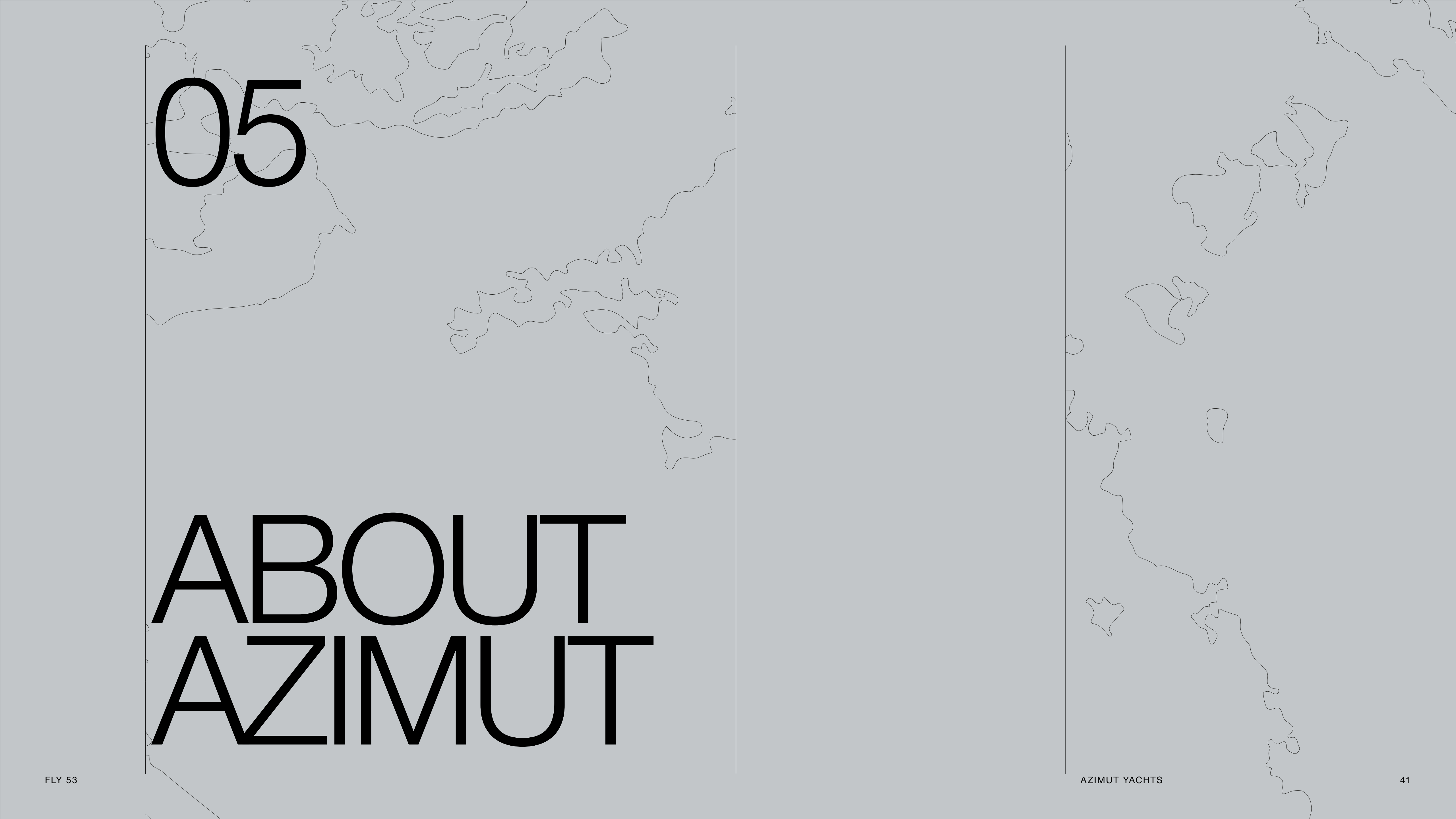
A barrierless and illuminated experience, the iconic Flybridge boat series was forged out of tradition to immerse its guests in the sea, while inspiring the unique feeling of open-air freedom.

Sleek and spacious all-Italian interiors are bound to create a sensational atmosphere, filling days and nights with charming comfort and lightness.

Experience yesterday's game-changer spirit upped by today's avant-garde air.

50
53
60
68
72
78





05

ABOUT AZIMUT



A FAMILY-MADE COMPANY CULTURE

An immense and personal passion for the sea. A clear and forward-facing attitude. A strong and relentless work ethic. Since 1969, Paolo Vitelli, the creative visionary founder and businessman behind Azimut, has been set on challenging the industry's status quo with a daring desire: bring to life an unexpected nautical experience, through yachts built to combine alluring aesthetics with construction expertise and impeccable technology.

An audacious mindset that has, over time, surprised and captivated the yachting sector, transforming Azimut into a bold and recognizable benchmark, and laying the foundation for the birth of the largest megayacht builder in the world, the Azimut | Benetti Group.

The international and management-based standing of the company today, is deeply nourished by the solid and memorable family heritage that has distinguished it from the beginning. A historically pioneering vision that enables it to continue thriving day after day, through ingenious inventions and long-term goals that look to the future with Paolo's daughter, Giovanna Vitelli.

A SUSTAINABLE VISION TODAY, FOR TOMORROW

An avant-garde vision and a strong emotional appeal have shaped the history of Azimut as a leader in the field of nautical innovation as well as its commitment to the creation of a sustainable-oriented and attentive company culture today.

An ambitious and personal touch that has allowed Azimut to grow and evolve on both levels, embracing the challenge of a future nurtured by an eco-conscious approach to boat construction and by an authentic focus and responsibility on human well-being.





OUR ♻️ ECO-YACHTING PHILOSOPHY

The Azimut I Benetti Group has made tangible investments to guide the Technical as well as the R&D departments toward the construction of yachts with a diminished environmental impact. Its main areas of intervention have focused on significantly lowering fuel consumption and CO2 emissions through the development of highly efficient hull designs, innovative propulsion systems and an extensive use of carbon fiber to decrease yacht weight.



A SAFE AND HEALTHY WORK ENVIRONMENT

The forerunning shipyard of Avigliana was the first of the company's Italian shipyards to obtain the ISO 45001 certification in 2011, attesting its rigorous abidance to all occupational health and safety requirements. Recognized as the most technologically-advanced shipyard in Europe, it has also led the nautical sector revolution in terms of being among the earliest adopters of the vacuum infusion process to drive resin into a laminate, avoiding styrene emissions and therefore guaranteeing its precious workers a healthier setting.

As of 2013, all the other Italian production sites have adapted to meet the necessary requirements to obtain the ISO 45001 certification.



A GLOBALLY-CONNECTED DEALER AND SERVICE NETWORK

5 SHIPYARDS

6 DIRECT OFFICES

138 OFFICIAL DEALERS

80 COUNTRIES

The highly widespread commercial network put in place by Azimut Yachts, allows the company to offer a continuous presence to its ship owners, concretely curating their demands by meeting their most specific needs.

[Find your Dealer →](#)



THE LARGEST PRIVATE GROUP IN THE YACHTING WORLD

Azimut is part of the Azimut | Benetti Group, the biggest private player and shipbuilder in the nautical sector today. The Vitelli family, the founder and majority shareholder of the company, has been leading the way for over fifty years now, continuing to innovate through the Group's main yacht brands, Azimut and Benetti, while developing a variety of service brands to cater to the different demands of ship owners worldwide.



OUR SHIPYARDS MAKE US PROUD

Avigliana — Italy

HQ / SHIPYARD

Savona — Italy

DELIVERY CENTRE

Viareggio — Italy

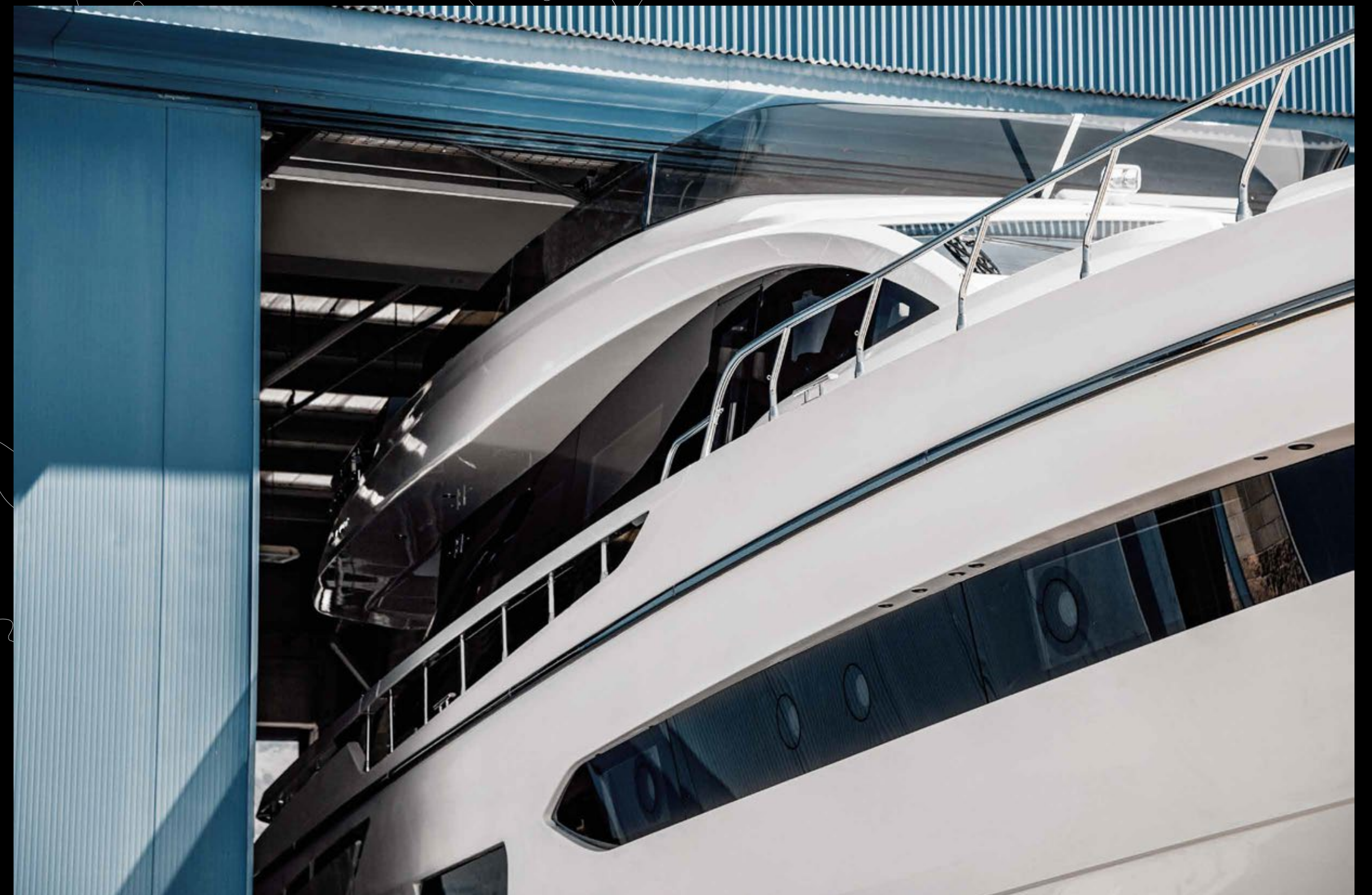
SHIPYARD / STYLING LOUNGE

Fano — Italy

SHIPYARD

Itajaí — Brazil

SHIPYARD





CONCEPT & DESIGN: APART
PHOTOS: ALESSANDRO GUERRIERI, GIOVANNI MALGARINI

AZIMUT YACHTS THANKS:
APR LUXURY LINEN, DEDAR, KARTELL, PAOLA C., PINETTI

OFFICIAL PARTNER



GARMIN.

Raymarine



VOLVO
PENTA

AZIMUT | BENETTI SPA
VIA MARTIN LUTHER KING, 9
10051 AVIGLIANA, TORINO
ITALY

RELEASE 09.22

This brochure in no way constitutes a contract of sale for the boatyard's vessels to any person or company. All information contained herein, including but not limited to technical and performance data, illustrations, and drawings, is non-binding and for purposes of illustration only. The information in this brochure refers to the boatyard's standard motoryacht models available as of the date of publication. Technical and descriptive information is valid only to the extent that it pertains to the specific vessel that is the subject of a purchase. Contract terms are valid only to the extent that they are contained in a contract of sale. This document is based on information available at the time of publication. Despite efforts to ensure the greatest possible accuracy, the information contained herein may fail to cover all details, omit technical or commercial changes that may have been made subsequent to publication, describe features that are not present, and fail to envisage all circumstances that might occur. Any illustrations, photographs, diagrams and examples shown in this brochure are included solely for the purposes of illustrating the text. Due to the different features of each vessel, the boatyard assumes no liability for actual use based on the illustrated applications.

AZIMUT

azimutyachts.com

