

30

AZIMUT

MAGELLANO 30M



INDEX

01	THE DESIGN & LIFESTYLE ON BOARD	P04
02	HER MAIN TECHNICAL FEATURES	P27
03	MAGELLANO 30M SPEC SHEET	P32
04	THE MAGELLANO SERIES	P37
05	ABOUT AZIMUT	P39



A one-of-a-kind beauty, enrapturing, that steals your breath away, leaving you speechless. An extraordinary idea as the only possible pathway, to get to where you want, to explore, to go beyond.

The freedom of embracing the unknown, that you know you'll love as a part of your very own story. A thought that provokes your mind and then inspires you to aim for the impossible, making mistakes, yet being brave. A magic je ne sais quoi that enchants and intrigues you, moving you to feel more and to sense uniqueness.

The choice to risk it all, the one that makes you go for it, to impress yourself and all those who are worth it.

AZIMUT.
DARE TO AMAZE.



01

THE DESIGN & LIFESTYLE ON BOARD

MAGELLANO 30M UNCONVENTIONAL PERFECTION



Exuding a sense of precious freedom, the Azimut Magellano 30M crossover emancipates a longing for authentic exploration. Constructed to excel in navigation to fascinating far-off destinations, she ignites the spark of curiosity and encourages spontaneous travel aspirations. The inspired interior ambience breathes elegance and abundance, with maximized spaces and luminosity further summoning the tantalizing feeling of onboard liberty.

Travel into freedom with the Magellano 30M.



Welcome aboard, ladies and gentlemen.

Let us begin the tour.





THE FIRST CROSSOVER COUPÉ



The exteriors of the Magellano 30M bear the signature of Ken Freivokh. His design is guided by the desire for an object of timeless and fascinating beauty, far from fads and passing trends. Characteristic teak louvers bring personality to her profile, venturing further into the unmistakable style of the series. Designed for long voyages in total comfort, the Magellano 30M is outfitted with high bulwarks and large windows to safely immerse guests in the marine environment.



CONCEIVED FOR ALL FRESCO LIVING



Flourishing under the hard top's protection, the dining arrangement is ample and comfortable, served by a fully equipped bar cabinet and a comfortable lounge sofa.



The aft of the upper deck is a sprawling openair terrace, equipped with every essential for unforgettable days suspended between sky and sea. A refined and functional bar is oriented toward the view, ahead of the recessed dining area, deeper under the shelter of the hard top. The sunbathing area sits exposed above the stern, offering an archipelago of free standing beds.



BREATHTAKING OPEN-AIR BEAUTY



[Characterized by unexpected geometries, the bow hosts a large lounging area, laid out as an archipelago of islands at various heights. The variety of thickness in the upholstery defines each furnishing's function as seat or sunbed. The forelounge can also be equipped with a jacuzzi.]



[The cockpit layout develops around the evocative Infinity Terrace, which stretches the rear view down to the waves. Three organic and fluidly shaped sofas are arranged in a circle, with an emphasis on preserving and enjoying this uniquely bare perspective on the sea.]

AT ONE WITH THE SEA



The transom hatch rotates down to create a pleasant platform on the sea, and may go even further to present a slide, easing the launch of the tender and jetski from the garage.





The sense of space is expanded by immersive windows that encircle the salon on three sides, almost without interruption, to reveal even more of nature's beauty. Natural light pours in, creating a new standard of communication between inside and outside, while enhancing the perception of space, together with the shape of the furniture and reflective surfaces.

WHEN FIBERGLASS BECOMES A WORK OF ART

The unconventional beauty of Magellano 30M manifests in myriad ways. Vincenzo De Cotiis and Azimut Yachts thrust fibreglass into the spotlight with a specially developed variant for this project. Usually a material that is forced to maintain a low profile, here it is meticulously worked, embellished and polished to become a stunning, innovative stylistic element that unashamedly takes center stage. Instead of its usual coarse, unfinished appearance, fiberglass has been transformed into something noble, profound and tactile.



FLOODED BY LIGHT AND SOAKING IN CHARM



Now, let us discover the guest accommodations.

Shall we?





BRIGHT, FLUID AND SURPRISING



The unique main deck master basks in the wonder of two full-height windows. A perfect playground for the abundant natural light, from the unusually shaped furnishings to the fine and rich materials, every detail contributes to an environment far beyond traditional conceptions, yet warmly welcoming with an aura of organic wellbeing.

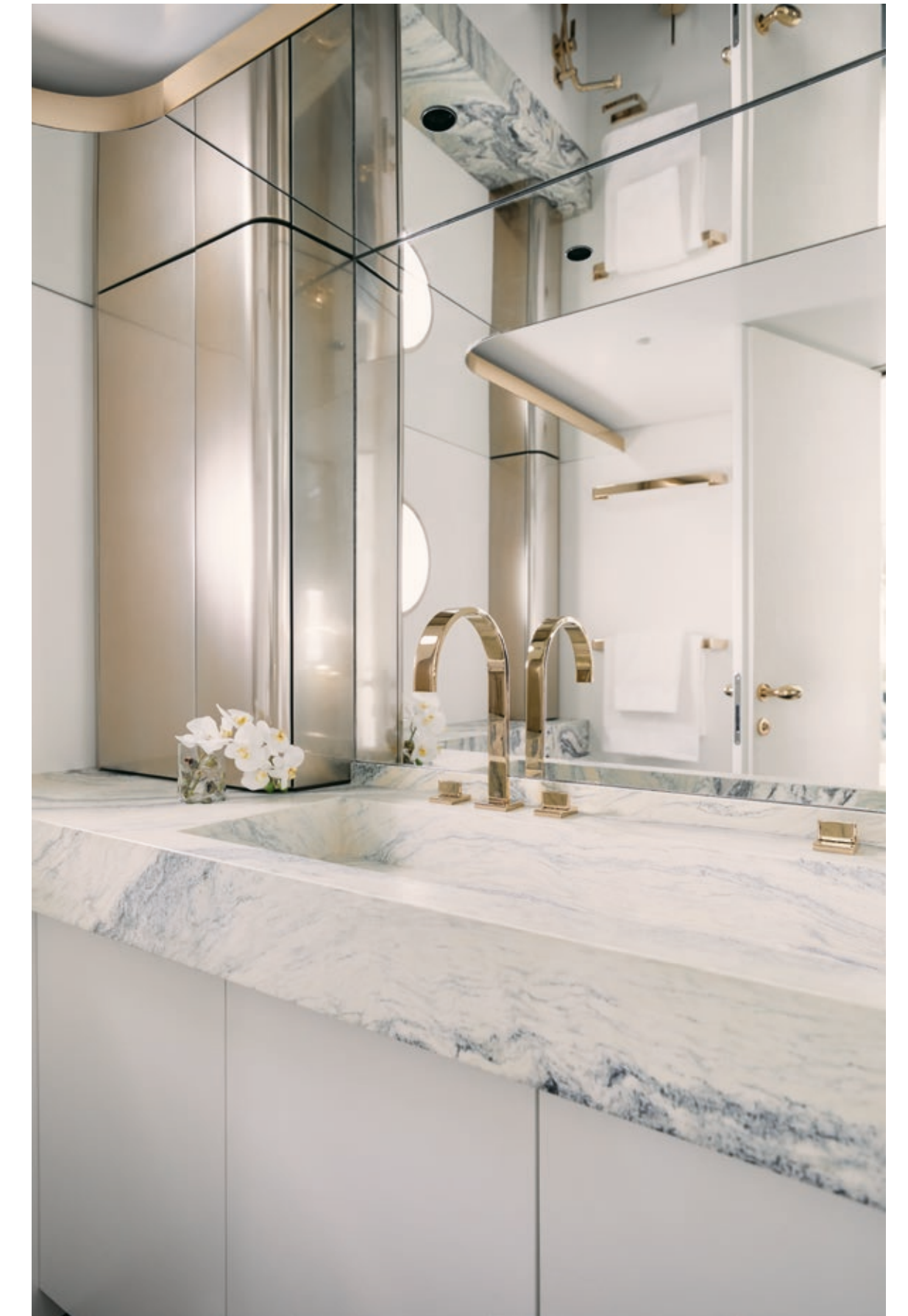
[A soft palette of natural and marine colours contributes to create a sophisticated and natural sense of wellbeing.]

[The full-height windows on both sides flood the owner's suite with light as if the walls were made of glass, expanding the perceived space and synergizing with the sophisticated selection of materials.]





View of the bow VIP cabin



DESIGNED TO WELCOME



The lower deck offers two VIP suites and two guest cabins, each characterized by the same attention to design that permeates the yacht from bow to stern.

02

HER MAIN TECHNICAL FEATURES

The beauty of the Magellano 30M is not solely a matter of exterior and interior design elements that combine to perfectly play out Azimut's essence. Her beauty lies also in discovering the technological advancements and special components that contribute to making her truly unique and highly innovative.

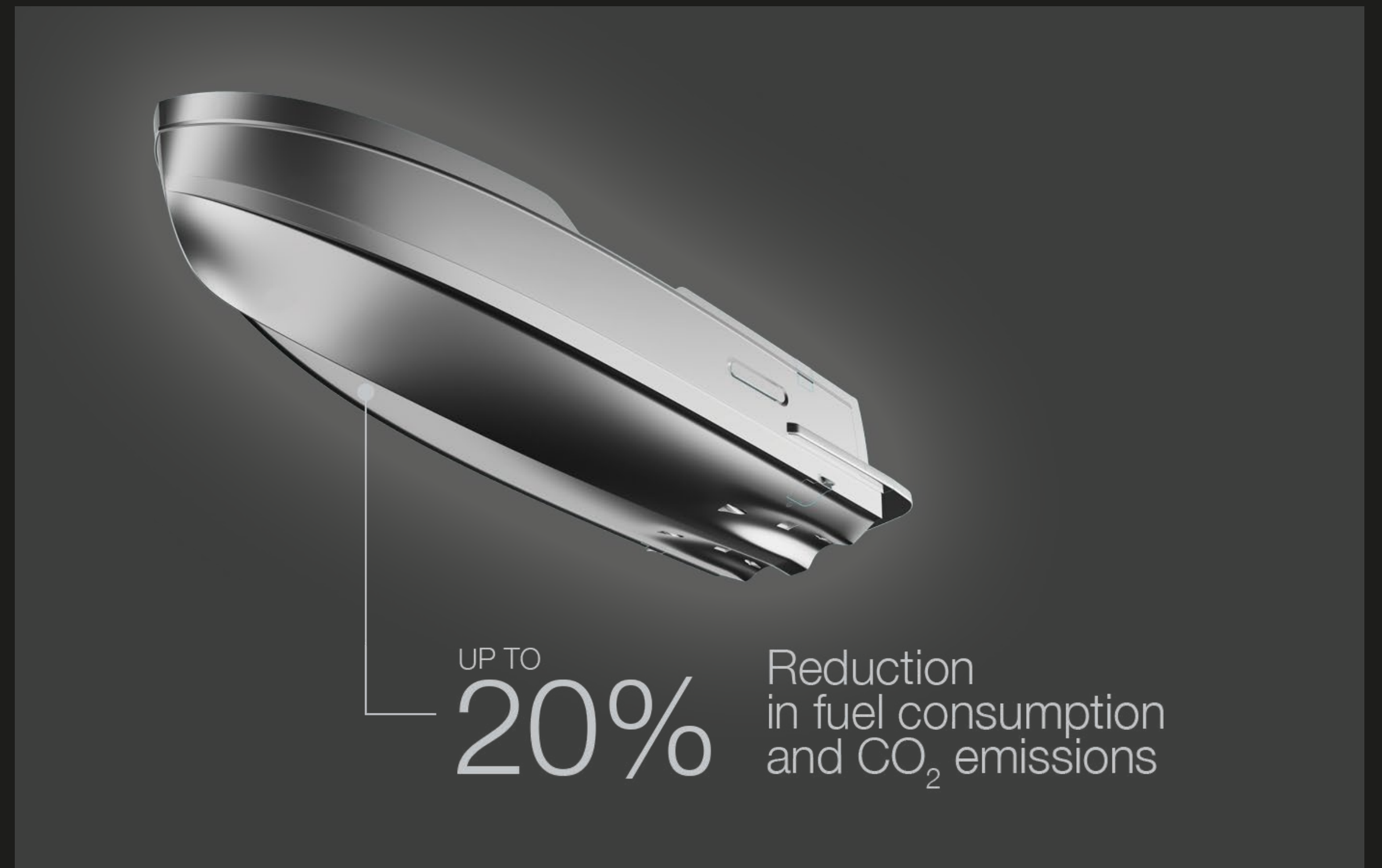


LOW EMISSION YACHT

DUAL MODE HULL

The Dual Mode hull is a highly efficient semi-planing hull designed to reduce fuel consumption and CO₂ emissions by up to 20 at medium speeds*, guaranteeing superior navigation comfort in a wider range of sea conditions. The double-chine hull, combined with the vertical bow, minimizes the impact of waves and thus offers greater freedom of navigation, cruising comfortably at low speeds for extended durations as well as at higher speeds.

*compared to vessels of the same weight and size with a traditional hard-chine hull



ZERO EMISSIONS HOTEL MODE

A 130kW/h lithium-ion battery pack can support the yacht's hotel load for up to 4 hours during the day and up to 8 hours at night. Now, it's possible to enjoy the full superyacht experience without the noise, vibration and emissions of the generators, making daytime activities more pleasant and nighttime relaxation more peaceful.



EFFICIENT AIR TREATMENT

Aircare Energy Saving completely refreshes the onboard atmosphere every two hours with filtered outside air, especially appreciated below deck. The decentralized system uses a dual-flow heat exchanger, so it can optimize both the temperature and the humidity of the incoming fresh air in each zone without increasing the parallel HVAC's energy consumption. Meanwhile, the triple multilayered filter eliminates 98% of fine particles that pollute the air, such as pollen, dust mites, spores and even some bacteria.



03

MAGELLANO 30M SPEC SHEET

GENERAL CHARACTERISTICS

LENGTH OVERALL	29,63 m	97' 5"
BEAM MAX	7,06 m	20' 08"
DRAFT	2,05 m	6' 9"
DISPLACEMENT	136 t	299826 lb
ENGINES	2 x MAN V12 1550 hp	2 x MAN V12 1900 hp
MAXIMUM SPEED	20 kn	
CRUISING SPEED	16 kn	
KEEL	Semidisplacement Dual Mode	
FUEL CAPACITY	14500 l	3831 US Gal
WATER CAPACITY	2130 l	563 US Gal
CABINS	5 + 3 crew	
BERTHS	10 + 5 crew	
HEAD COMPARTMENTS	6 + 3 crew	
BUILDING MATERIAL	GRP	
EXTERIOR DESIGNER	Ken Freivokh	
INTERIOR DESIGNER	De Cotiis Architects	
HULL DESIGNER	P.L. AUSONIO Naval Architecture & Azimut R&D Dept.	
BUILDER	Azimut Yachts	
CERTIFICAZIONI /CERTIFICATIONS	Structural project compliant with Rina Class Pleasure Certificate (certificate upon request as optional)	

Last updated 10.2022

Please consult your dealer for the latest specifications.

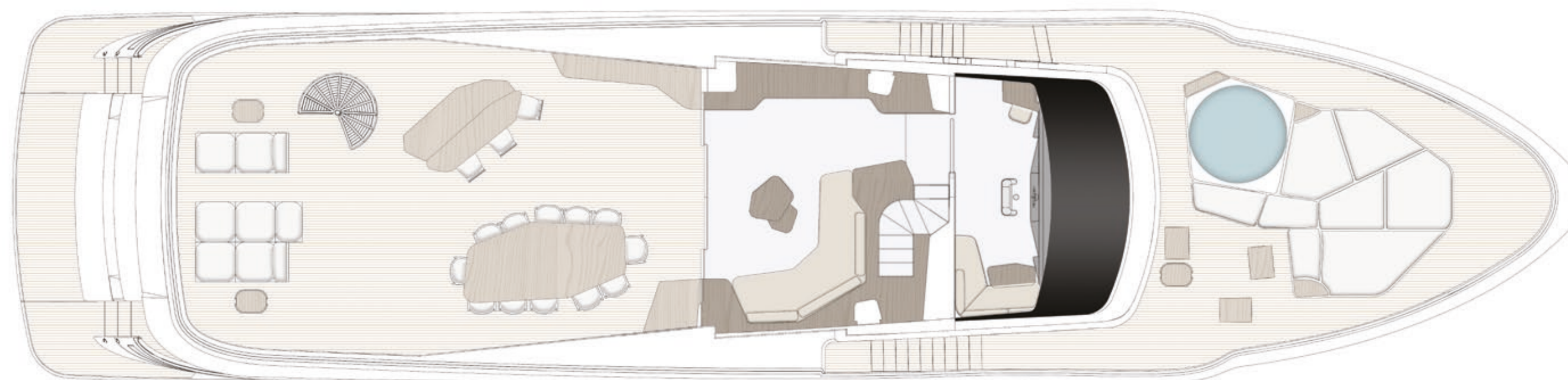
UNI ISO 8666

The performance described applies to a vessel with standard configuration (standard equipment installed) and a clean hull, propellers, and rudder. It is also noted that the performance described was recorded under favourable sea and wind conditions (Beaufort scale index 1, Douglas scale index 1); different and worse sea conditions could significantly impact performance.

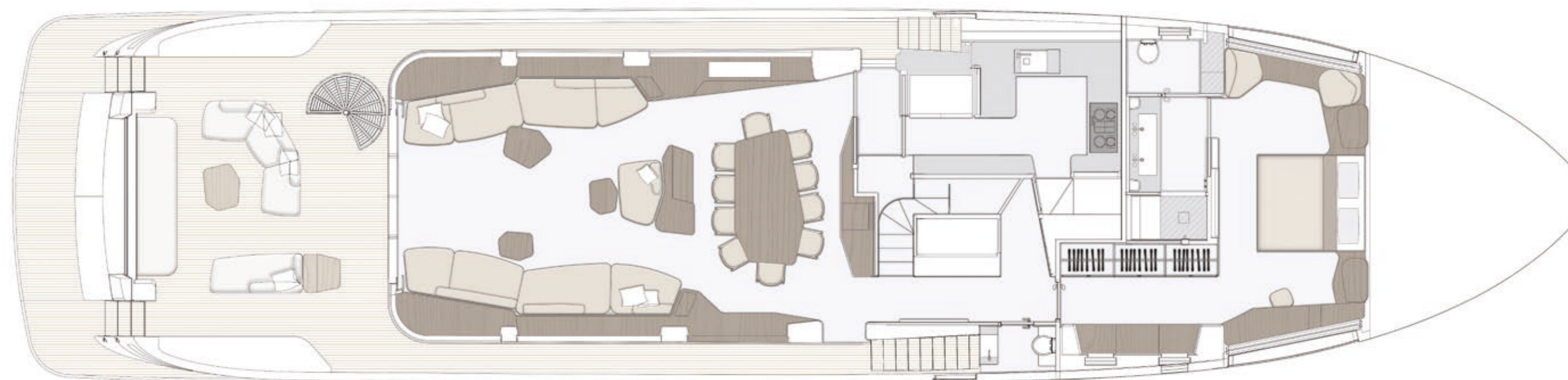
CE MARK

Given the continual evolution of technology, Azimut | Benetti S.p.A reserves the right to modify the technical specifications on its vessels at any time and without prior notice.

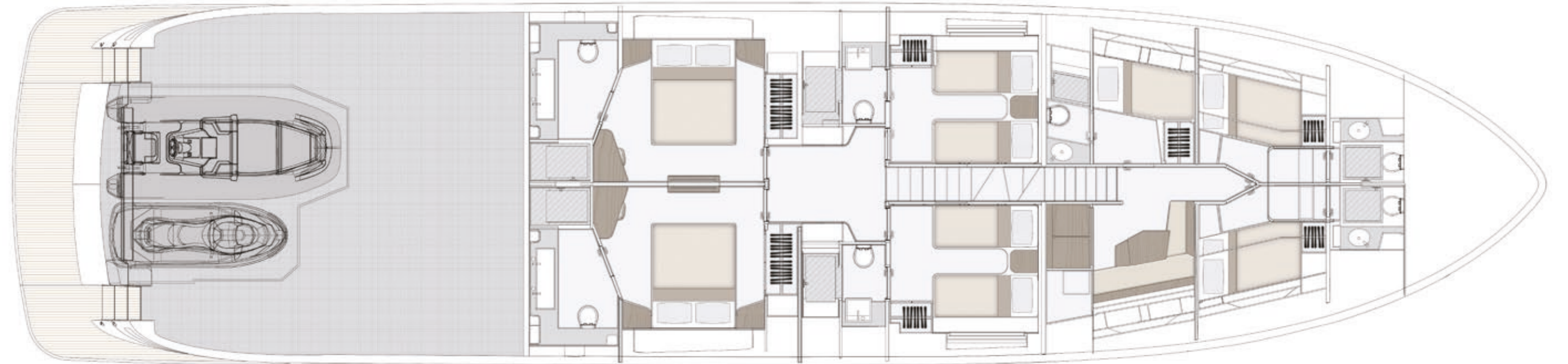
FLYBRIDGE



MAIN DECK



LOWER DECK



04

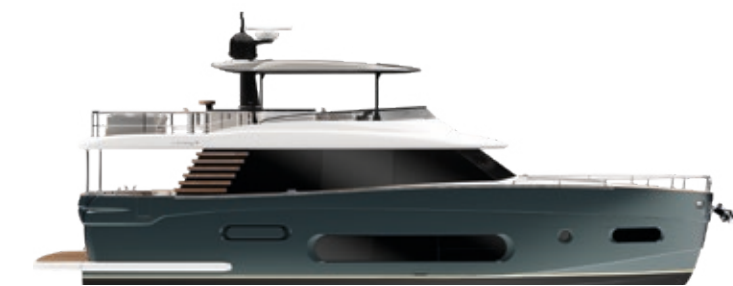
THE MAGELLANO SERIES

THE TIMELESS YET CONTEMPORARY CROSSOVER

Epitomizing the spirit of adventure and discovery, the Azimut Magellano Series represents a timeless yet modern-day milestone of innovation. As the first nautical crossover ever designed, its concept aims to evoke the profound relationship of sea connoisseurs with the marine habitat, accomplishing construction savoir-faire to offer tranquil, long-range journeys in all weather conditions and classically sophisticated interiors with thoughtful storage space.

Prepare to savor your time at sea, navigating the world at your own personal pace.

60
66
25M
30M



05

ABOUT AZIMUT



A FAMILY-MADE COMPANY CULTURE

An immense and personal passion for the sea. A clear and forward-facing attitude. A strong and relentless work ethic. Since 1969, Paolo Vitelli, the creative visionary founder and businessman behind Azimut, has been set on challenging the industry's status quo with a daring desire: bring to life an unexpected nautical experience, through yachts built to combine alluring aesthetics with construction expertise and impeccable technology.

An audacious mindset that has, over time, surprised and captivated the yachting sector, transforming Azimut into a bold and recognizable benchmark, and laying the foundation for the birth of the largest megayacht builder in the world, the Azimut | Benetti Group.

The international and management-based standing of the company today, is deeply nourished by the solid and memorable family heritage that has distinguished it from the beginning. A historically pioneering vision that enables it to continue thriving day after day, through ingenious inventions and long-term goals that look to the future with Paolo's daughter, Giovanna Vitelli.

A SUSTAINABLE VISION TODAY, FOR TOMORROW

An avant-garde vision and a strong emotional appeal have shaped the history of Azimut as a leader in the field of nautical innovation as well as its commitment to the creation of a sustainable-oriented and attentive company culture today.

An ambitious and personal touch that has allowed Azimut to grow and evolve on both levels, embracing the challenge of a future nurtured by an eco-conscious approach to boat construction and by an authentic focus and responsibility on human well-being.





OUR ♻️ ECO-YACHTING PHILOSOPHY

The Azimut I Benetti Group has made tangible investments to guide the Technical as well as the R&D departments toward the construction of yachts with a diminished environmental impact. Its main areas of intervention have focused on significantly lowering fuel consumption and CO2 emissions through the development of highly efficient hull designs, innovative propulsion systems and an extensive use of carbon fiber to decrease yacht weight.



A SAFE AND HEALTHY WORK ENVIRONMENT

The forerunning shipyard of Avigliana was the first of the company's Italian shipyards to obtain the ISO 45001 certification in 2011, attesting its rigorous abidance to all occupational health and safety requirements. Recognized as the most technologically-advanced shipyard in Europe, it has also led the nautical sector revolution in terms of being among the earliest adopters of the vacuum infusion process to drive resin into a laminate, avoiding styrene emissions and therefore guaranteeing its precious workers a healthier setting.

As of 2013, all the other Italian production sites have adapted to meet the necessary requirements to obtain the ISO 45001 certification.



MAGELLANO 30M



AZIMUT YACHTS

A GLOBALLY-CONNECTED DEALER AND SERVICE NETWORK

5 SHIPYARDS

6 DIRECT OFFICES

138 OFFICIAL DEALERS

80 COUNTRIES

The highly widespread commercial network put in place by Azimut Yachts, allows the company to offer a continuous presence to its ship owners, concretely curating their demands by meeting their most specific needs.

[Find your Dealer →](#)



THE LARGEST PRIVATE GROUP IN THE YACHTING WORLD

Azimut is part of the Azimut | Benetti Group, the biggest private player and shipbuilder in the nautical sector today. The Vitelli family, the founder and majority shareholder of the company, has been leading the way for over fifty years now, continuing to innovate through the Group's main yacht brands, Azimut and Benetti, while developing a variety of service brands to cater to the different demands of ship owners worldwide.



OUR SHIPYARDS MAKE US PROUD

Avigliana — Italy

HQ / SHIPYARD

Savona — Italy

DELIVERY CENTRE

Viareggio — Italy

SHIPYARD / STYLING LOUNGE

Fano — Italy

SHIPYARD

Itajaí — Brazil

SHIPYARD



CONCEPT & DESIGN: APART
PHOTOS: ALESSANDRO GUERRIERI, MICHELA LOCCI

AZIMUT YACHTS THANKS:
APR LUXURY LINEN, DE COTIIS ARCHITECTS, LORO PIANA,
DEDAR, PINETTI, PAOLA LENTI

OFFICIAL PARTNER



GARMIN.

Raymarine



VOLVO
PENTA

AZIMUT | BENETTI SPA
VIA MARTIN LUTHER KING, 9
10051 AVIGLIANA, TORINO
ITALY

RELEASE 09.22

This brochure in no way constitutes a contract of sale for the boatyard's vessels to any person or company. All information contained herein, including but not limited to technical and performance data, illustrations, and drawings, is non-binding and for purposes of illustration only. The information in this brochure refers to the boatyard's standard motoryacht models available as of the date of publication. Technical and descriptive information is valid only to the extent that it pertains to the specific vessel that is the subject of a purchase. Contract terms are valid only to the extent that they are contained in a contract of sale. This document is based on information available at the time of publication. Despite efforts to ensure the greatest possible accuracy, the information contained herein may fail to cover all details, omit technical or commercial changes that may have been made subsequent to publication, describe features that are not present, and fail to envisage all circumstances that might occur. Any illustrations, photographs, diagrams and examples shown in this brochure are included solely for the purposes of illustrating the text. Due to the different features of each vessel, the boatyard assumes no liability for actual use based on the illustrated applications.

^ZIMUT

azimutyachts.com

