

AZIMUT



MAGELLANO 60



INDEX

01	THE DESIGN & LIFESTYLE ON BOARD	P04
02	HER MAIN TECHNICAL FEATURES	P23
03	MAGELLANO 60 SPEC SHEET	P27
04	THE MAGELLANO SERIES	P32
05	ABOUT AZIMUT	P34



A one-of-a-kind beauty, enrapturing, that steals your breath away, leaving you speechless. An extraordinary idea as the only possible pathway, to get to where you want, to explore, to go beyond.

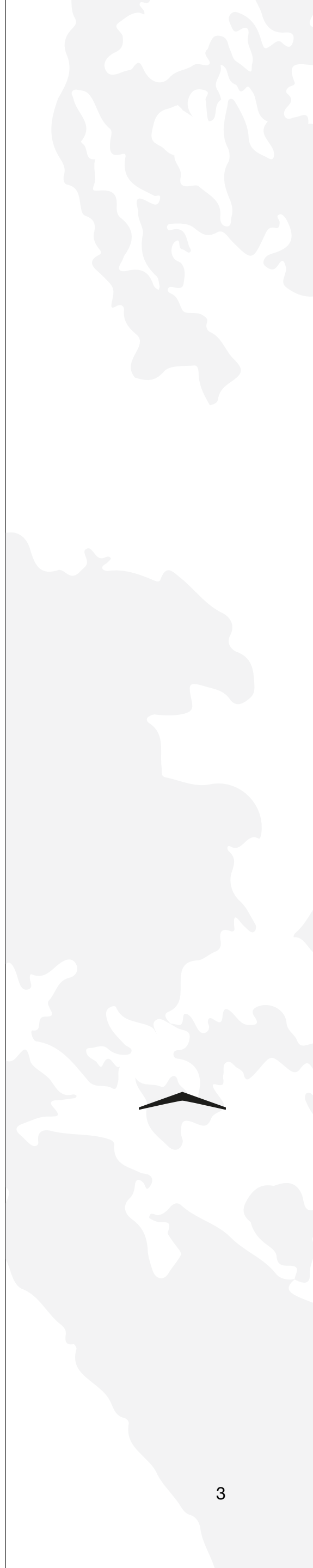
The freedom of embracing the unknown, that you know you'll love as a part of your very own story. A thought that provokes your mind and then inspires you to aim for the impossible, making mistakes, yet being brave.

A magic je ne sais quoi that enchants and intrigues you, moving you to feel more and to sense uniqueness.

The choice to risk it all, the one that makes you go for it, to impress yourself and all those who are worth it.

Welcome to Azimut.

AZIMUT.
DARE TO AMAZE.





01

THE DESIGN & LIFESTYLE ON BOARD

A SOPHISTICATED ADVENTURE SEEKER



An ode to freedom and elegance, the new Magellano 60 is a crossover that gracefully expresses an explorer spirit boosted by the navigational prowess of a Dual Mode hull. Its discreet charm smoothly unwraps through ample spaces with a luminous nature, while its comfort courteously delivers a travel privilege that knows no boundaries. A pleasant and promising onboard philosophy for prolonged journeys to new frontiers.

Free your inner explorer with the Magellano 60.



Welcome aboard, ladies and gentlemen.

Let us begin the tour.





DESIGNED TO WELCOME





A VISUALLY IMMERSIVE EXPERIENCE



The cockpit is large and extends longitudinally to leave the aft glass parapet free, which offers a spectacular view of the horizon. The table can be raised transforming the terrace into a pleasant dining area.



CHARMING COMFORT



The internal dining area sits before a floor-to-ceiling window, which offers breathtaking views of the waves. The table, with its practical square shape, can be raised and extended if necessary, allowing six guests to lunch comfortably in the presence of the sea.



COZY CHIC



Now, let us discover the guest accommodations.

Shall we?





ENHANCED ELEGANCE



View of the bow VIP cabin



THE ART OF HOSPITALITY



View of the bow VIP cabin







02

HER MAIN TECHNICAL FEATURES

An ode to freedom and elegance, the new Magellano 60 is a crossover that gracefully expresses an explorer spirit boosted by the navigational prowess of a Dual Mode hull. Its discreet charm smoothly unwraps through ample spaces with a luminous nature, while its comfort courteously delivers a travel privilege that knows no boundaries. A pleasant and promising onboard philosophy for prolonged journeys to new frontiers.

Free your inner explorer with the Magellano 60.



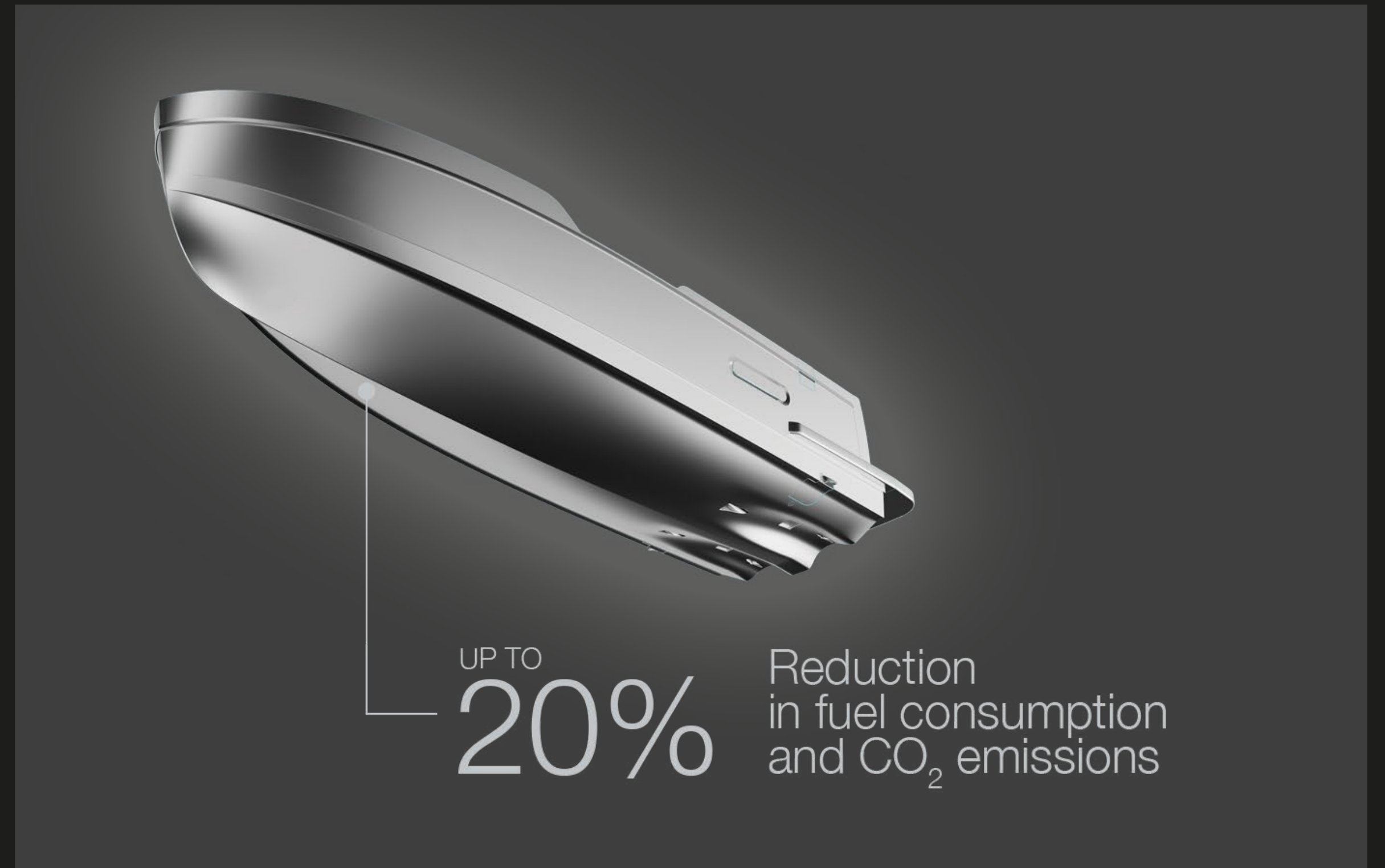
LOW EMISSION YACHT



DUAL MODE HULL

The Dual Mode hull is a highly efficient semi-planing hull designed to reduce fuel consumption and CO₂ emissions by up to 20 at medium speeds*, guaranteeing superior navigation comfort in a wider range of sea conditions. The double-chine hull, combined with the vertical bow, minimizes the impact of waves and thus offers greater freedom of navigation, cruising comfortably at low speeds for extended durations as well as at higher speeds.

*compared to vessels of the same weight and size with a traditional hard-chine hull



ACTIVE TRIM CONTROL

Automated interceptors optimize the trim at every speed to maintain ideal hydrodynamics for performance and efficiency, at the same time negating any lateral imbalance due to sidewinds or weight distribution. With the pilot's peace of mind assured, the driving experience is simpler and more enjoyable.



03

MAGELLANO 60

SPEC SHEET

GENERAL CHARACTERISTICS

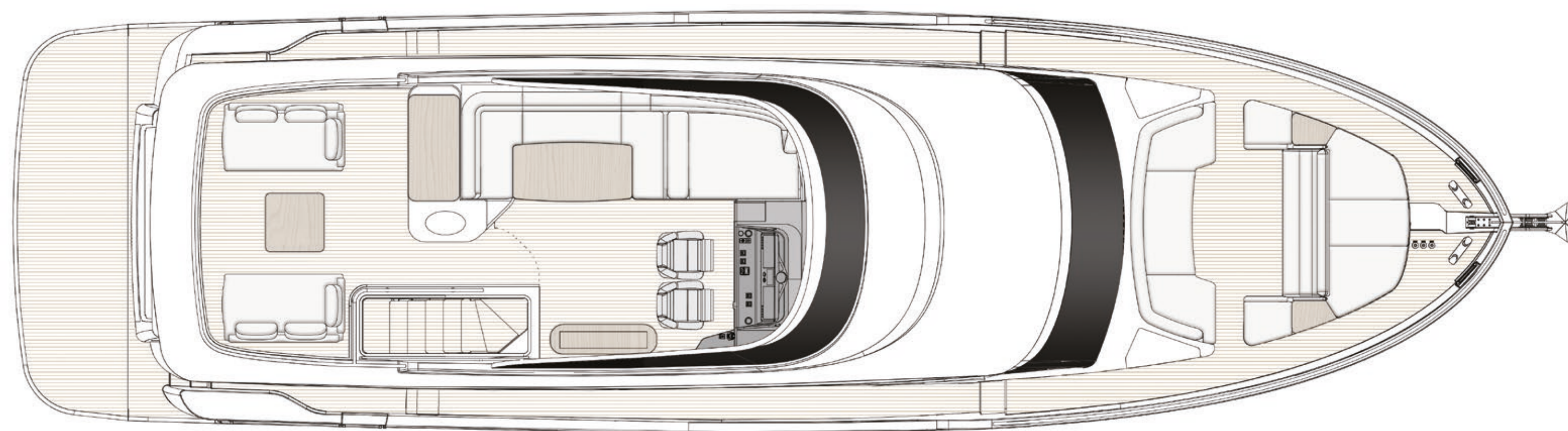
LENGTH OVERALL	18,36 m	60' 3"
BEAM MAX	5,15 m	16' 11"
DRAFT	1,37 m	4' 6"
DISPLACEMENT	39,5 t	87082 lb
ENGINES	2 X MAN i6 730 hp	
MAXIMUM SPEED	up to 25 kn	
CRUISING SPEED	16 kn	
KEEL	Semiplaning Dual Mode Hull	
FUEL CAPACITY	3800 l	1400 US Gal
WATER CAPACITY	750 l	1653 US Gal
CABINS	3 + 1 crew	
BERTHS	6 + 1 crew	
HEAD COMPARTMENTS	3 + 1 crew	
BUILDING MATERIAL	GRP	
EXTERIOR DESIGNER	Ken Freivokh	
INTERIOR DESIGNER	Azimut Yachts	
HULL DESIGNER	Profjord & Azimut R&D Dept.	
BUILDER	Azimut Yachts	
CERTIFICATIONS	CE A; NMMA	

Last updated 11.2022
Please consult your dealer for the latest specifications.

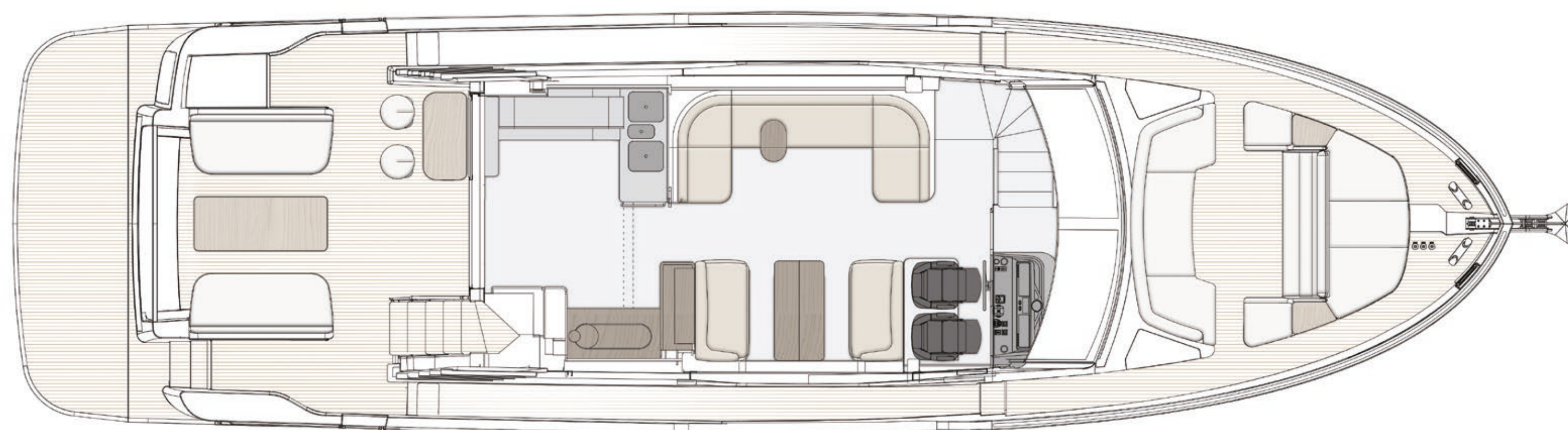
UNI ISO 8666
The performance described applies to a vessel with standard configuration (standard equipment installed) and a clean hull, propellers, and rudder. It is also noted that the performance described was recorded under favourable sea and wind conditions (Beaufort scale index 1, Douglas scale index 1); different and worse sea conditions could significantly impact performance.

CE MARK
Given the continual evolution of technology, Azimut | Benetti S.p.A reserves the right to modify the technical specifications on its vessels at any time and without prior notice.

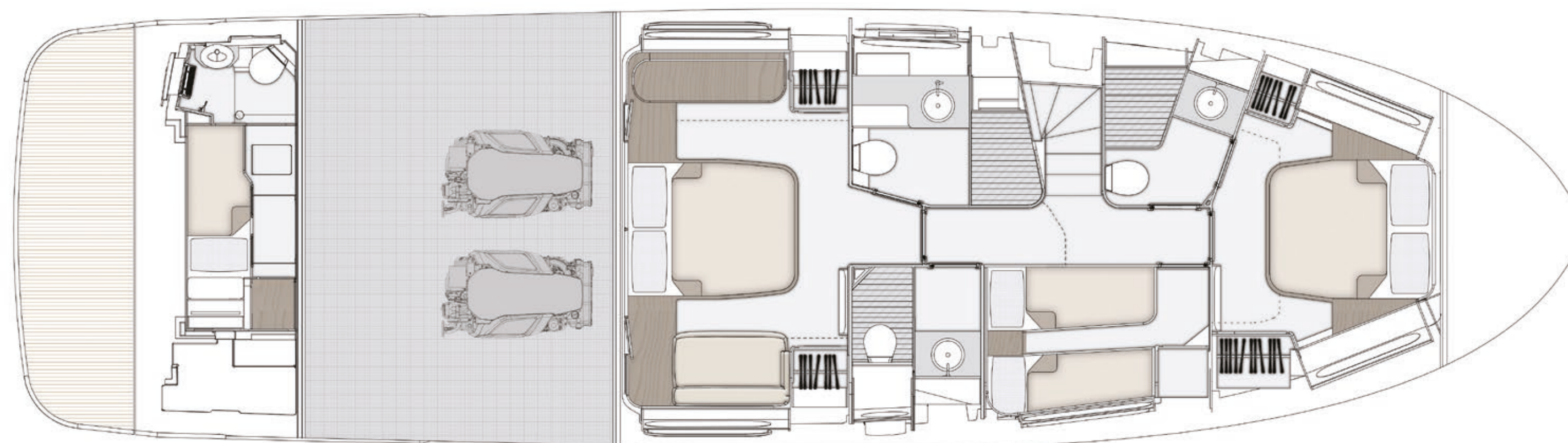
FLYBRIDGE



MAIN DECK



LOWER DECK



04

THE MAGELLANO SERIES

THE TIMELESS YET CONTEMPORARY CROSSOVER

Epitomizing the spirit of adventure and discovery, the Azimut Magellano Series represents a timeless yet modern-day milestone of innovation. As the first nautical crossover ever designed, its concept aims to evoke the profound relationship of sea connoisseurs with the marine habitat, accomplishing construction savoir-faire to offer tranquil, long-range journeys in all weather conditions and classically sophisticated interiors with thoughtful storage space.

Prepare to savor your time at sea, navigating the world at your own personal pace.

60
66
25M
30M



05

ABOUT AZIMUT



A FAMILY-MADE COMPANY CULTURE

An immense and personal passion for the sea. A clear and forward-facing attitude. A strong and relentless work ethic. Since 1969, Paolo Vitelli, the creative visionary founder and businessman behind Azimut, has been set on challenging the industry's status quo with a daring desire: bring to life an unexpected nautical experience, through yachts built to combine alluring aesthetics with construction expertise and impeccable technology.

An audacious mindset that has, over time, surprised and captivated the yachting sector, transforming Azimut into a bold and recognizable benchmark, and laying the foundation for the birth of the largest megayacht builder in the world, the Azimut | Benetti Group.

The international and management-based standing of the company today, is deeply nourished by the solid and memorable family heritage that has distinguished it from the beginning. A historically pioneering vision that enables it to continue thriving day after day, through ingenious inventions and long-term goals that look to the future with Paolo's daughter, Giovanna Vitelli.

A SUSTAINABLE VISION TODAY, FOR TOMORROW

An avant-garde vision and a strong emotional appeal have shaped the history of Azimut as a leader in the field of nautical innovation as well as its commitment to the creation of a sustainable-oriented and attentive company culture today.

An ambitious and personal touch that has allowed Azimut to grow and evolve on both levels, embracing the challenge of a future nurtured by an eco-conscious approach to boat construction and by an authentic focus and responsibility on human well-being.





OUR ♻️ ECO-YACHTING PHILOSOPHY

The Azimut I Benetti Group has made tangible investments to guide the Technical as well as the R&D departments toward the construction of yachts with a diminished environmental impact. Its main areas of intervention have focused on significantly lowering fuel consumption and CO2 emissions through the development of highly efficient hull designs, innovative propulsion systems and an extensive use of carbon fiber to decrease yacht weight.



A SAFE AND HEALTHY WORK ENVIRONMENT

The forerunning shipyard of Avigliana was the first of the company's Italian shipyards to obtain the ISO 45001 certification in 2011, attesting its rigorous abidance to all occupational health and safety requirements. Recognized as the most technologically-advanced shipyard in Europe, it has also led the nautical sector revolution in terms of being among the earliest adopters of the vacuum infusion process to drive resin into a laminate, avoiding styrene emissions and therefore guaranteeing its precious workers a healthier setting.

As of 2013, all the other Italian production sites have adapted to meet the necessary requirements to obtain the ISO 45001 certification.



A GLOBALLY-CONNECTED DEALER AND SERVICE NETWORK

5 SHIPYARDS

6 DIRECT OFFICES

138 OFFICIAL DEALERS

80 COUNTRIES

The highly widespread commercial network put in place by Azimut Yachts, allows the company to offer a continuous presence to its ship owners, concretely curating their demands by meeting their most specific needs.

[Find your Dealer →](#)



THE LARGEST PRIVATE GROUP IN THE YACHTING WORLD

Azimut is part of the Azimut | Benetti Group, the biggest private player and shipbuilder in the nautical sector today. The Vitelli family, the founder and majority shareholder of the company, has been leading the way for over fifty years now, continuing to innovate through the Group's main yacht brands, Azimut and Benetti, while developing a variety of service brands to cater to the different demands of ship owners worldwide.



OUR SHIPYARDS MAKE US PROUD

Avigliana — Italy

HQ / SHIPYARD

Savona — Italy

DELIVERY CENTRE

Viareggio — Italy

SHIPYARD / STYLING LOUNGE

Fano — Italy

SHIPYARD

Itajaí — Brazil

SHIPYARD



CONCEPT & DESIGN: APART

OFFICIAL PARTNER



GARMIN.

Raymarine



VOLVO
PENTA

AZIMUT | BENETTI SPA
VIA MARTIN LUTHER KING, 9
10051 AVIGLIANA, TORINO
ITALY

RELEASE 09.22

This brochure in no way constitutes a contract of sale for the boatyard's vessels to any person or company. All information contained herein, including but not limited to technical and performance data, illustrations, and drawings, is non-binding and for purposes of illustration only. The information in this brochure refers to the boatyard's standard motoryacht models available as of the date of publication. Technical and descriptive information is valid only to the extent that it pertains to the specific vessel that is the subject of a purchase. Contract terms are valid only to the extent that they are contained in a contract of sale. This document is based on information available at the time of publication. Despite efforts to ensure the greatest possible accuracy, the information contained herein may fail to cover all details, omit technical or commercial changes that may have been made subsequent to publication, describe features that are not present, and fail to envisage all circumstances that might occur. Any illustrations, photographs, diagrams and examples shown in this brochure are included solely for the purposes of illustrating the text. Due to the different features of each vessel, the boatyard assumes no liability for actual use based on the illustrated applications.

AZIMUT

azimutyachts.com

