

^ZIMUT



INDEX

01	THE DESIGN & LIFESTYLE ON BOARD	P04
02	HER MAIN TECHNICAL FEATURES	P21
03	S7 SPEC SHEET	P30
04	THE S SERIES	P35
05	ABOUT AZIMUT	P37



A one-of-a-kind beauty, enrapturing, that steals your breath away, leaving you speechless. An extraordinary idea as the only possible pathway, to get to where you want, to explore, to go beyond.

The freedom of embracing the unknown, that you know you'll love as a part of your very own story. A thought that provokes your mind and then inspires you to aim for the impossible, making mistakes, yet being brave.


A magic je ne sais quoi that enchants and intrigues you, moving you to feel more and to sense uniqueness.

The choice to risk it all, the one that makes you go for it, to impress yourself and all those who are worth it.

Welcome to Azimut.

AZIMUT.
DARE TO AMAZE.





01

THE DESIGN & LIFESTYLE ON BOARD

S7, THE SMART SPORT YACHT

Shaped by an ambitious technological calling to be the most forward-facing sport yacht in her category, the S7 is a paradigm of peak performance and luxurious leisure. A marvel of razor agility and precision, she guarantees the lowest fuel consumption possible and a uniquely quiet allure. The main deck offers a fluid continuum between indoor and outdoor zones, allowing guests to savor their time and space at sea instinctively, in complete and harmonious freedom.

Embody an eco-sporty nature with the S7.





Welcome aboard, ladies and gentlemen.

Let us begin the tour.





AT ONE WITH SEA AND SKY

FREE TO CHARME

The continuity between the external and internal lounging liquifies the main deck into a unique area, offering the owner a relaxed and free style of onboard living.





The carbon fiber-enhanced superstructure offers more spacious environments while maintaining excellent levels of performance and stability. The interior lounge is cool and modernly organized, flooded with light from the large side windows.



[The interiors designed by Yachtique are cozy and sophisticated and, thanks to the large windows, the space perception is enhanced.]

YOUR COZY RESIDENCE ON THE SEA



DESIGNED TO WELCOME



The main deck is like a big open air lounge area. In addition to the spacious sun lounging areas both fore and aft, the deck is designed and furnished to create a sophisticated living area to relax in and enjoy your life on the sea at the utmost.



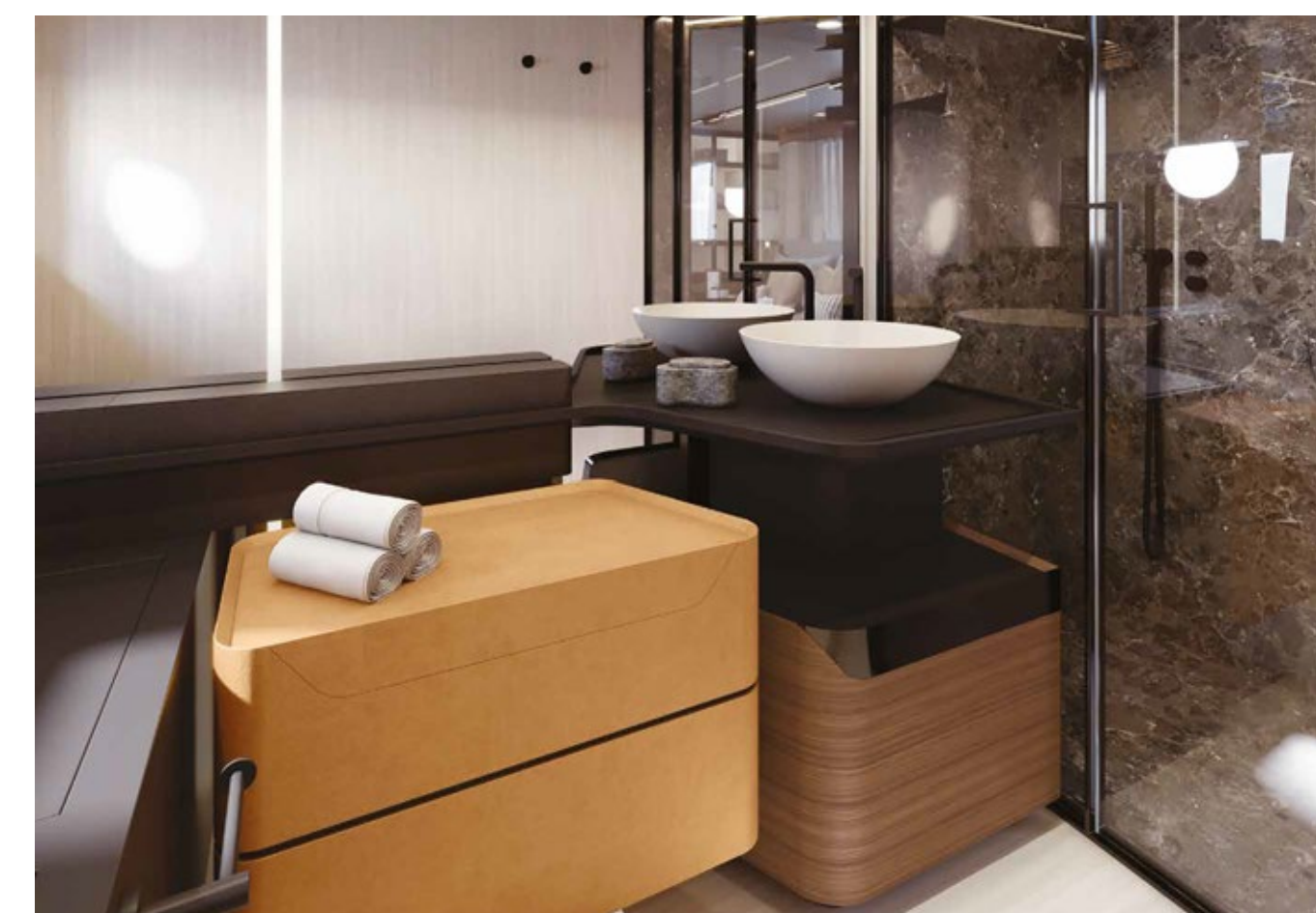
Now, let us discover the guest accommodations.

Shall we?





[Guests are surprised by the unprecedented layout with four comfortable cabins. It's possible through the advanced triple pod propulsion system, which comes with a more compact engine room.]




THE ART OF HOSPITALITY

The VIP suite is generous and comfortable. Abundant light flows freely from the wide windows on both sides.









02

HER MAIN TECHNICAL FEATURES

The beauty of the S7 is not solely a matter of exterior and interior design elements that combine to perfectly play out Azimut's essence. Her beauty is also about discovering the technological advancements and special components that contribute to making her truly unique and highly innovative.



LOW EMISSION YACHT



TRIPLE POD PROPULSION COMBINED WITH CARBON FIBER

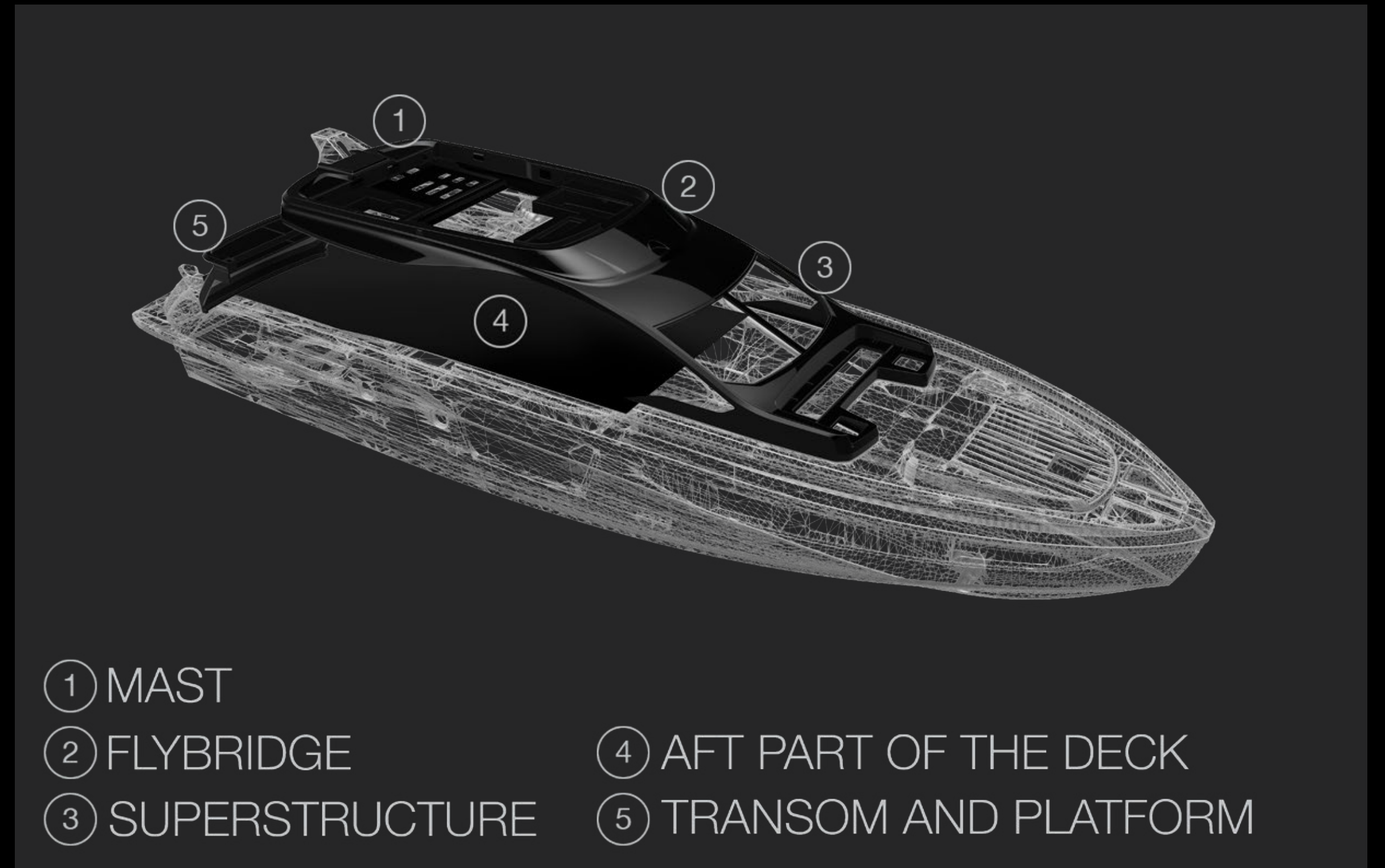
The adoption of triple Pod propulsion, combined with the optimization of the water lines and the extensive use of carbon fiber, reduces fuel consumption and CO₂ emissions by 20 to 30%* in the main speed range.

*compared to vessels of the same weight and size with a traditional hard-chine hull and shaft line propulsion



CARBON-TECH GENERATION

Azimut's pioneering use of carbon fiber lamination goes beyond pure performance. The Carbon Tech Generation offers expanded volumes on board, while maintaining excellent dynamic stability and perfect handling. Preserving the yacht's low center of gravity, the carbon fiber was focused on the upper parts of the yacht, lightening the laminated components by up to 30% and reducing the natural roll momentum up to 15%.



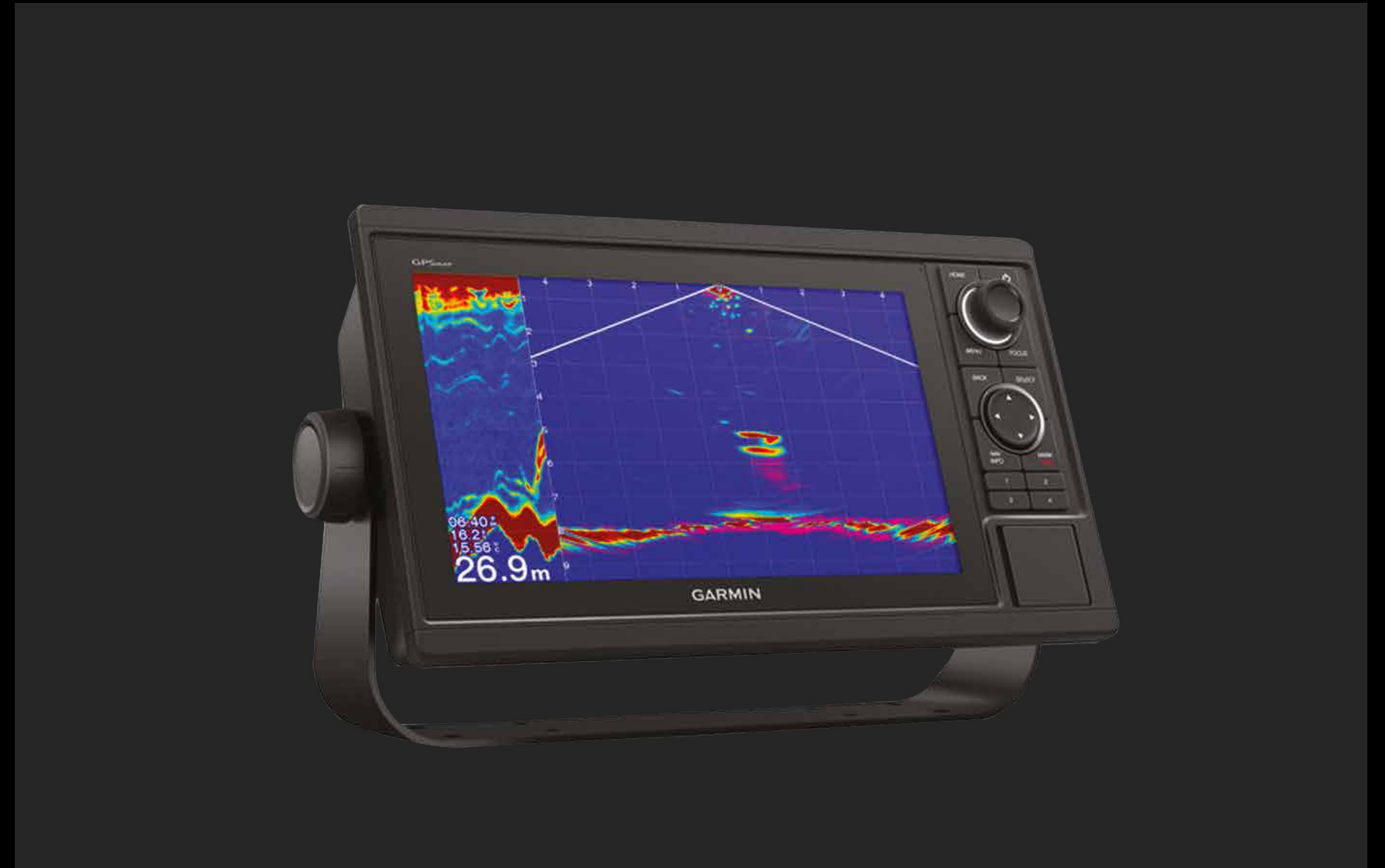
ACTIVE TRIM CONTROL

Automated interceptors optimize the trim at every speed to maintain ideal hydrodynamics for performance and efficiency, at the same time negating any lateral imbalance due to sidewinds or weight distribution. With the pilot's peace of mind assured, the driving experience is simpler and more enjoyable.



INTEGRATED CONTROL AND MONITORING SYSTEM

The custom-installed Garmin electronics have been integrated to control and monitor every onboard system: from engines and alarms, to bilge and water discharge pumps, tank levels and engine room ventilation, right through to the sound system and the air conditioning units. The system can be accessed on board from both the interior and exterior helm stations and, with the mobile app, remotely from a tablet or smartphone.



JOYSTICK DRIVING


The Joystick acts as an analog for the yacht, offering intuitive, one-handed control in every situation. When the yacht is stopped, moving the Joystick forward or back, side to side, and twisting clockwise or counter-clockwise activates the engines to mimic that motion. It's the easiest way to pull off precise maneuvers. When Joystick Driving is activated, the autopilot is immediately engaged. For easy course correction, the driver may briefly twist the Joystick for 1 degree in that direction or twist and hold for 10 degrees. The Autopilot keeps a forward course after the Joystick is released.



HTS HIGH TECHNICAL STANDARD DECLARATION

This yacht's design and engineering meet the highest standards for production recreational vessels. Azimut Yachts issues a declaration of the premium materials, advanced technology and rigorous testing procedures.





03

SS7

SPEC SHEET

GENERAL CHARACTERISTICS

LENGTH OVERALL	21,68 m	71' 2"
BEAM MAX	5,15 m	16' 1"
DRAFT	1,69	5' 7"
DISPLACEMENT	46 t	101412 lb
MOTORIZZAZIONE / ENGINES	3 x Volvo PENTA D13 IPS1050 800 hp	
MAXIMUM SPEED	up to 35 kn	
CRUISING SPEED	up to 27 kn	
KEEL	V-shape con deadrise 13,8° a poppa	
FUEL CAPACITY	3800 l	1004 US Gal
WATER CAPACITY	1000 l	264 US Gal
CABINS	4 + 1 crew	
BERTHS	8 + 2 crew	
HEAD COMPARTMENTS	3 + 1 crew	
BUILDING MATERIAL	Carbon fibre + GRP	
EXTERIOR DESIGNER	Alberto Mancini	
INTERIOR DESIGNER	Yachtique	
BUILDER	Azimut Yachts	
HULL DESIGNER	P.L. AUSONIO Naval Architecture & Azimut R&D Dept.	
CERTIFICATIONS	CE A; NMMA	

Last updated 09.2022

Please consult your dealer for the latest specifications.

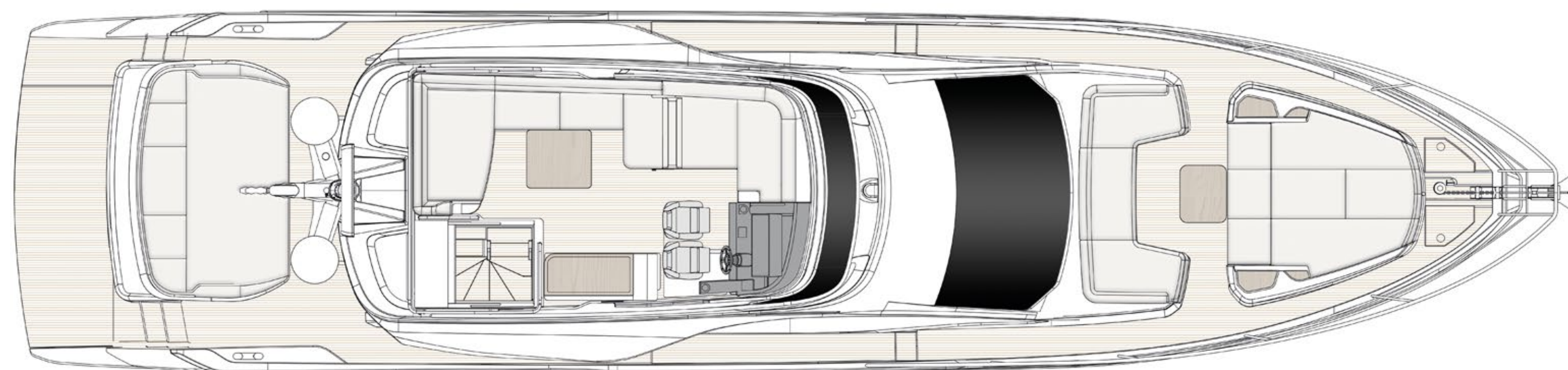
UNI ISO 8666

The performance described applies to a vessel with standard configuration (standard equipment installed) and a clean hull, propellers, and rudder. It is also noted that the performance described was recorded under favourable sea and wind conditions (Beaufort scale index 1, Douglas scale index 1); different and worse sea conditions could significantly impact performance.

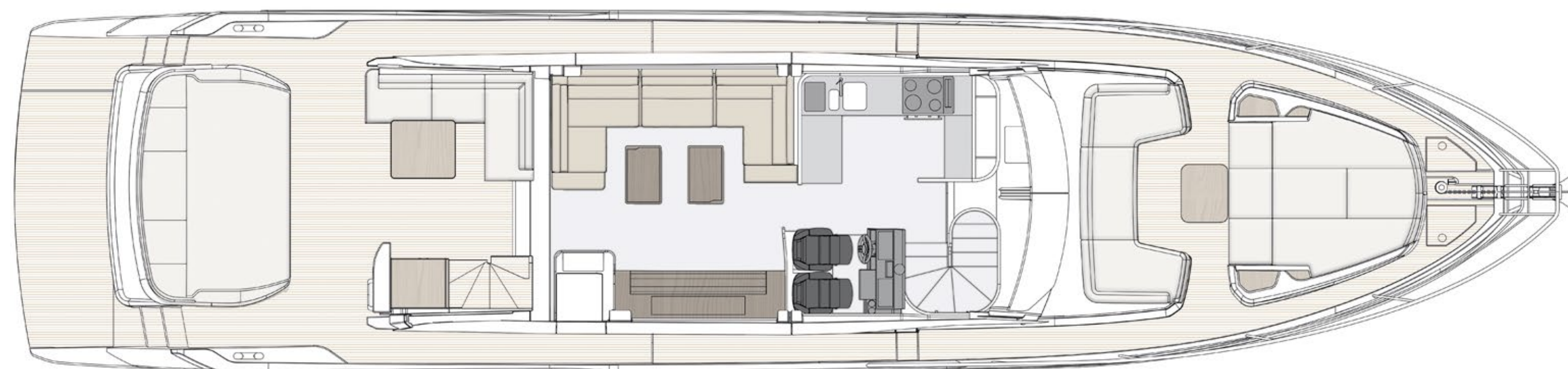
CE MARK

Given the continual evolution of technology, Azimut | Benetti S.p.A reserves the right to modify the technical specifications on its vessels at any time and without prior notice.

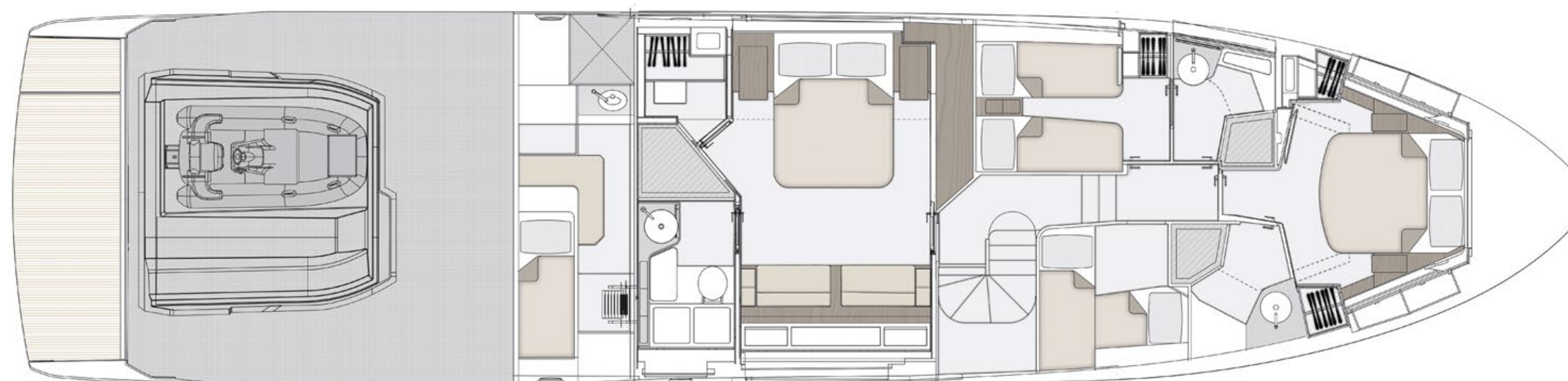
FLYBRIDGE



MAIN DECK



LOWER DECK



04

THE SERIES S

AVANT-GARDE INTELLIGENCE

The seductively sportive Azimut S Series is the market's pinnacle of technological advancement and performance. Sensually streamlined exteriors make for a fiercely dynamic aesthetic, combining with innovative propulsion systems and last generation hulls to deliver a uniquely sporty experience. Daringly fusing high speed and extreme manoeuvrability with the lowest consumption of fuel achievable in its class, the S Series also makes extensive use of carbon fiber on its yachts to grant vast volumes without impacting on weight, therefore offering unanticipated ample living spaces.

Embrace the beauty of avant-garde intelligence.

S6
S7
S8
S10



05

ABOUT AZIMUT



A FAMILY-MADE COMPANY CULTURE

An immense and personal passion for the sea. A clear and forward-facing attitude. A strong and relentless work ethic. Since 1969, Paolo Vitelli, the creative visionary founder and businessman behind Azimut, has been set on challenging the industry's status quo with a daring desire: bring to life an unexpected nautical experience, through yachts built to combine alluring aesthetics with construction expertise and impeccable technology.

An audacious mindset that has, over time, surprised and captivated the yachting sector, transforming Azimut into a bold and recognizable benchmark, and laying the foundation for the birth of the largest megayacht builder in the world, the Azimut | Benetti Group.

The international and management-based standing of the company today, is deeply nourished by the solid and memorable family heritage that has distinguished it from the beginning. A historically pioneering vision that enables it to continue thriving day after day, through ingenious inventions and long-term goals that look to the future with Paolo's daughter, Giovanna Vitelli.

A SUSTAINABLE VISION TODAY, FOR TOMORROW

An avant-garde vision and a strong emotional appeal have shaped the history of Azimut as a leader in the field of nautical innovation as well as its commitment to the creation of a sustainable-oriented and attentive company culture today.

An ambitious and personal touch that has allowed Azimut to grow and evolve on both levels, embracing the challenge of a future nurtured by an eco-conscious approach to boat construction and by an authentic focus and responsibility on human well-being.





OUR ♻️ ECO-YACHTING PHILOSOPHY

The Azimut I Benetti Group has made tangible investments to guide the Technical as well as the R&D departments toward the construction of yachts with a diminished environmental impact. Its main areas of intervention have focused on significantly lowering fuel consumption and CO2 emissions through the development of highly efficient hull designs, innovative propulsion systems and an extensive use of carbon fiber to decrease yacht weight.



A SAFE AND HEALTHY WORK ENVIRONMENT

The forerunning shipyard of Avigliana was the first of the company's Italian shipyards to obtain the ISO 45001 certification in 2011, attesting its rigorous abidance to all occupational health and safety requirements. Recognized as the most technologically-advanced shipyard in Europe, it has also led the nautical sector revolution in terms of being among the earliest adopters of the vacuum infusion process to drive resin into a laminate, avoiding styrene emissions and therefore guaranteeing its precious workers a healthier setting.

As of 2013, all the other Italian production sites have adapted to meet the necessary requirements to obtain the ISO 45001 certification.



A GLOBALLY-CONNECTED DEALER AND SERVICE NETWORK

5 SHIPYARDS

6 DIRECT OFFICES

138 OFFICIAL DEALERS

80 COUNTRIES

The highly widespread commercial network put in place by Azimut Yachts, allows the company to offer a continuous presence to its ship owners, concretely curating their demands by meeting their most specific needs.

[Find your Dealer →](#)



THE LARGEST PRIVATE GROUP IN THE YACHTING WORLD

Azimut is part of the Azimut | Benetti Group, the biggest private player and shipbuilder in the nautical sector today. The Vitelli family, the founder and majority shareholder of the company, has been leading the way for over fifty years now, continuing to innovate through the Group's main yacht brands, Azimut and Benetti, while developing a variety of service brands to cater to the different demands of ship owners worldwide.



OUR SHIPYARDS MAKE US PROUD

Avigliana — Italy

HQ / SHIPYARD

Savona — Italy

DELIVERY CENTRE

Viareggio — Italy

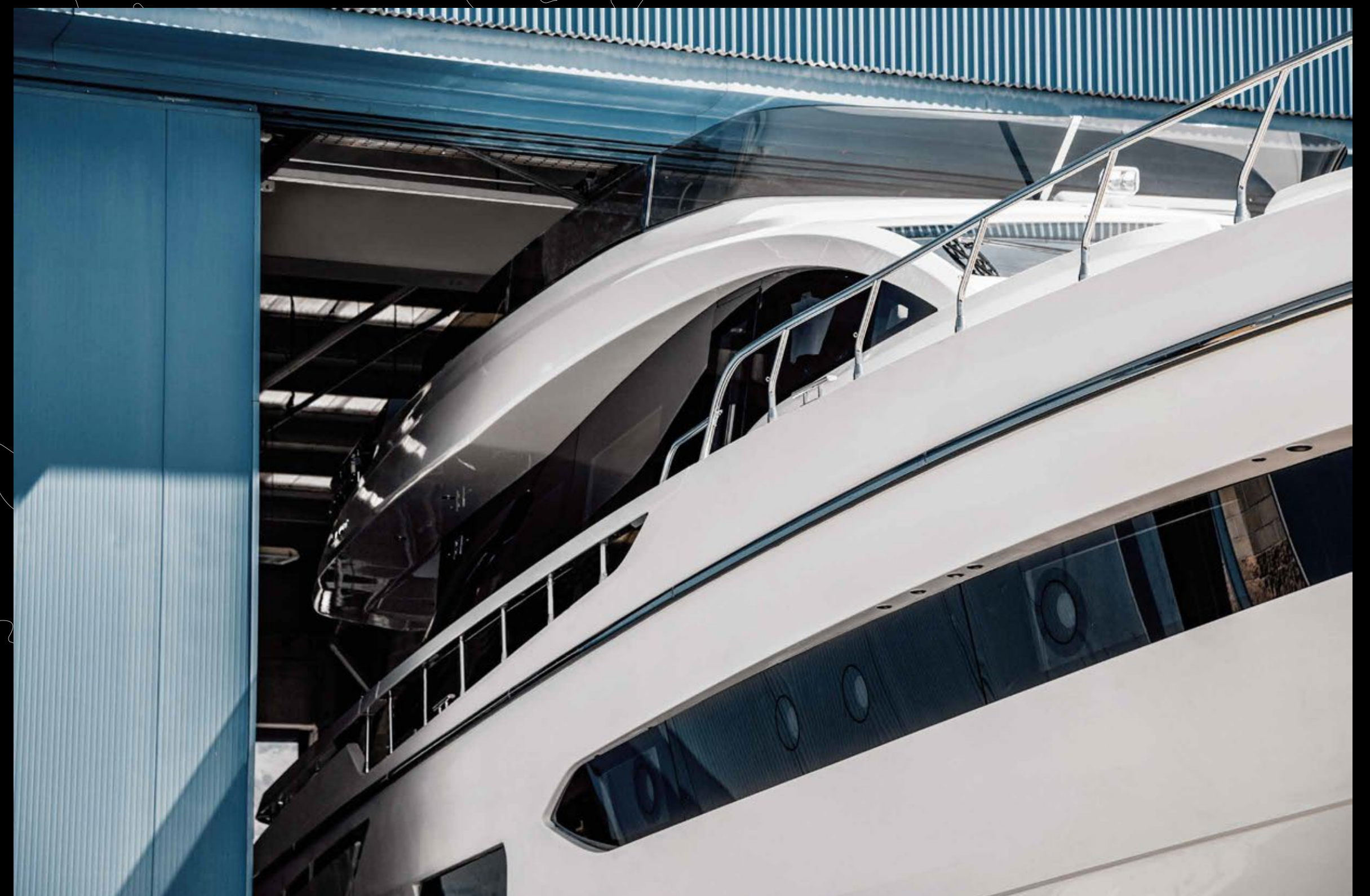
SHIPYARD / STYLING LOUNGE

Fano — Italy

SHIPYARD

Itajaí — Brazil

SHIPYARD





CONCEPT & DESIGN: APART

OFFICIAL PARTNER



GARMIN.

Raymarine



VOLVO
PENTA

AZIMUT | BENETTI SPA
VIA MARTIN LUTHER KING, 9
10051 AVIGLIANA, TORINO
ITALY

RELEASE 09.22

This brochure in no way constitutes a contract of sale for the boatyard's vessels to any person or company. All information contained herein, including but not limited to technical and performance data, illustrations, and drawings, is non-binding and for purposes of illustration only. The information in this brochure refers to the boatyard's standard motoryacht models available as of the date of publication. Technical and descriptive information is valid only to the extent that it pertains to the specific vessel that is the subject of a purchase. Contract terms are valid only to the extent that they are contained in a contract of sale. This document is based on information available at the time of publication. Despite efforts to ensure the greatest possible accuracy, the information contained herein may fail to cover all details, omit technical or commercial changes that may have been made subsequent to publication, describe features that are not present, and fail to envisage all circumstances that might occur. Any illustrations, photographs, diagrams and examples shown in this brochure are included solely for the purposes of illustrating the text. Due to the different features of each vessel, the boatyard assumes no liability for actual use based on the illustrated applications.

AZIMUT

azimutyachts.com

