

**^ZIMUT**



**VERVE 42**



# INDEX

01	THE DESIGN & LIFESTYLE ON BOARD	P04
02	HER MAIN TECHNICAL FEATURES	P25
03	VERVE 42 SPEC SHEET	P30
04	THE VERVE SERIES	P34
05	ABOUT AZIMUT	P36



A one-of-a-kind beauty, enrapturing, that steals your breath away, leaving you speechless. An extraordinary idea as the only possible pathway, to get to where you want, to explore, to go beyond.

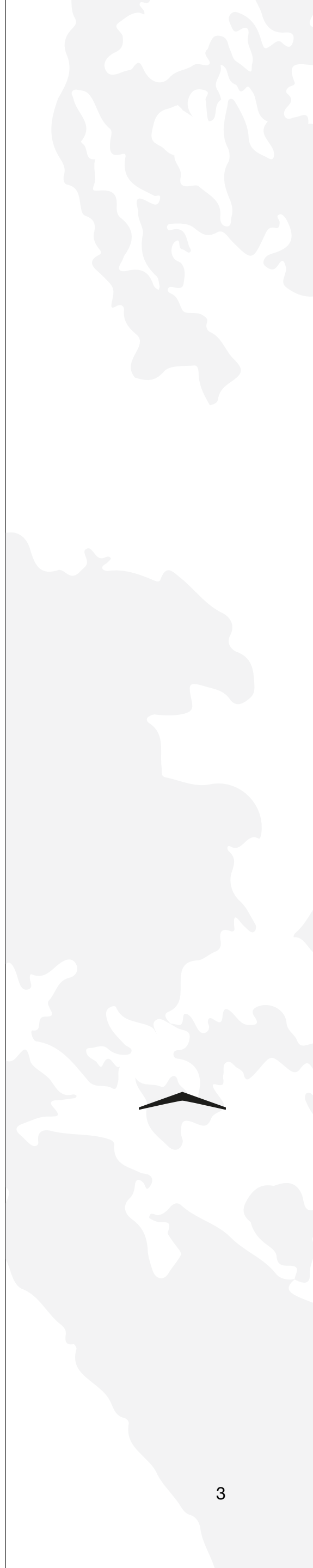
The freedom of embracing the unknown, that you know you'll love as a part of your very own story. A thought that provokes your mind and then inspires you to aim for the impossible, making mistakes, yet being brave.


A magic je ne sais quoi that enchants and intrigues you, moving you to feel more and to sense uniqueness.

The choice to risk it all, the one that makes you go for it, to impress yourself and all those who are worth it.

Welcome to Azimut.

AZIMUT.  
DARE TO AMAZE.





01

# THE DESIGN & LIFESTYLE ON BOARD



# THE PURSUIT OF ADRENALINE

Rebellious energy and excitement come to life in Verve 42. Forward-facing and adrenalinic, this performance-driven outboard yacht incorporates a fast and compact nature, while cultivating a contemporary sense of luxury on board. A unique and novel boat for the segment, this fresh weekender's elegant and livable habitats pave the way to easy well-being, giving guests the chance to appreciate relaxed refinement as well as an uncompromised navigational ambition all in one.

Challenge the rules with Verve 42.



[ The fibreglass bulwarks are contoured into an element of design, fluidly forming a handrail amidships before it blends back into the hull. ]







Welcome aboard, ladies and gentlemen.

Let us begin the tour.







SHE IS BOLD  
AND AMBITIOUS





[ The windows taper towards the bow, highlighting the sleek, dynamic hull and curving upwards into the gunwale to create a helm position where the pilot is at water level. ]

Create a deep, authentic connection with the sea and foster a sporty atmosphere on board, brought to life in unmistakably Italian fashion. This was the clear and ambitious brief behind Francesco Struglia's design for the Verve 42, a distinctive and unapologetically sporty yacht. The windows taper towards the bow, highlighting the sleek, dynamic hull and curving upwards into the gunwale to create a helm position where the pilot is at water level. It has never been so easy to get up close and personal with the sea and sea it literally rush past your eyes while cruising.







# A BOW MADE FOR AL FRESCO LIVING

The asymmetrical split-level layout of the bow is designed to maximise space for outdoor living. Up top is an ample cushioned sunbathing area while just below is a versatile al fresco lounge-cum-dining zone with a six-person table surrounded by an inviting C-shaped divan.





# RELAXATION IS THE NAME OF THE GAME

The concept behind the design of the exterior areas is to enable the owner and guests to fully enjoy the extraordinary privilege of life on the water.

Versatility is to the fore, with a high-low table that can be completely removed from sight, a lateral open section and well-equipped cockpit cabinet creating an enticing, glamorous aft area that is simply made for long, convivial afternoons and evenings relaxing with friends and family.









# A PERFECT FUSION OF FUN AND FUNCTIONALITY

A simple button seamlessly adjusts the height of the cockpit table making it ideal for a meal or as a handy surface for drinks, books or games. Or, if you want to clear space for a spot of impromptu partying, it can also disappear completely from the deck, leaving you with a totally free floor surface. Alternatively, you can add cushions to transform it into an additional sun lounging zone.







The compact but comprehensive cabinet contains all you need for your onboard entertainment, including a wet bar, fridge, ice maker, barbecue, cooking hob, dishwasher and height-adjustable TV.





# BREATH TAKINGLY BEAUTIFUL

Designed to place you as close to the sea as possible, the cockpit features a side panel that opens up and niftily transforms into a surprising platform over the water.





# IMMERSE YOURSELF IN A STUNNING NEW CONCEPT OF LIFE AT SEA



Designed to bring the sea as close as possible, the cockpit features a side panel that opens out in a matter of seconds to become a surprising platform over the water.



[ The Verve 42 reaches a maximum speed of 45 knots, peaking at 33 knots in cruising mode, powered by a trio of 400- or 450-hp Mercury outboard engines which were chosen specifically for their capacity to deliver optimal performance to this dynamic sporty yacht. ]







The helm area is flanked by windows in the hull that sweep up to gunwale level, creating a visual connection with the exterior environment.

This exciting design feature also places the pilot right amongst the action, in the heart of the wake at high speeds, with water rushing by on either side almost as though it were part of the boat's structure.

The instrument panel, inspired by automotive design, contains three Raymarine Axiom 16-inch screens brimming with navigational data, digital buttons and onboard control system.





Now, let us discover the guest accommodations.

Shall we?









# DESIGNED TO WELCOME

The Verve 42 may be designed to give you the freedom to weigh anchor and explore at any moment, but it also invites you to make yourself at home when you find yourself in a particularly idyllic spot.

The below-deck dining area transforms into a double bed, while the comfortable double cabin with ensuite can accommodate up to four guests, making it ideal for planned and impulsive overnight stays.










[ The galley is fitted out with a fridge, washing machine, cooktop and plenty of storage. The dinette can be easily converted into a comfortable double bed, sectioned off from the galley by a curtain. ]







02

# HER MAIN TECHNICAL FEATURES



The beauty of the Verve 42 is not solely a matter of exterior and interior design elements that combine to perfectly play out Azimut's essence.

Her beauty is also about discovering the technological advancements and special components that contribute to making her truly unique and highly innovative.



# HIGH PERFORMANCE DOUBLE STEPPED HULL

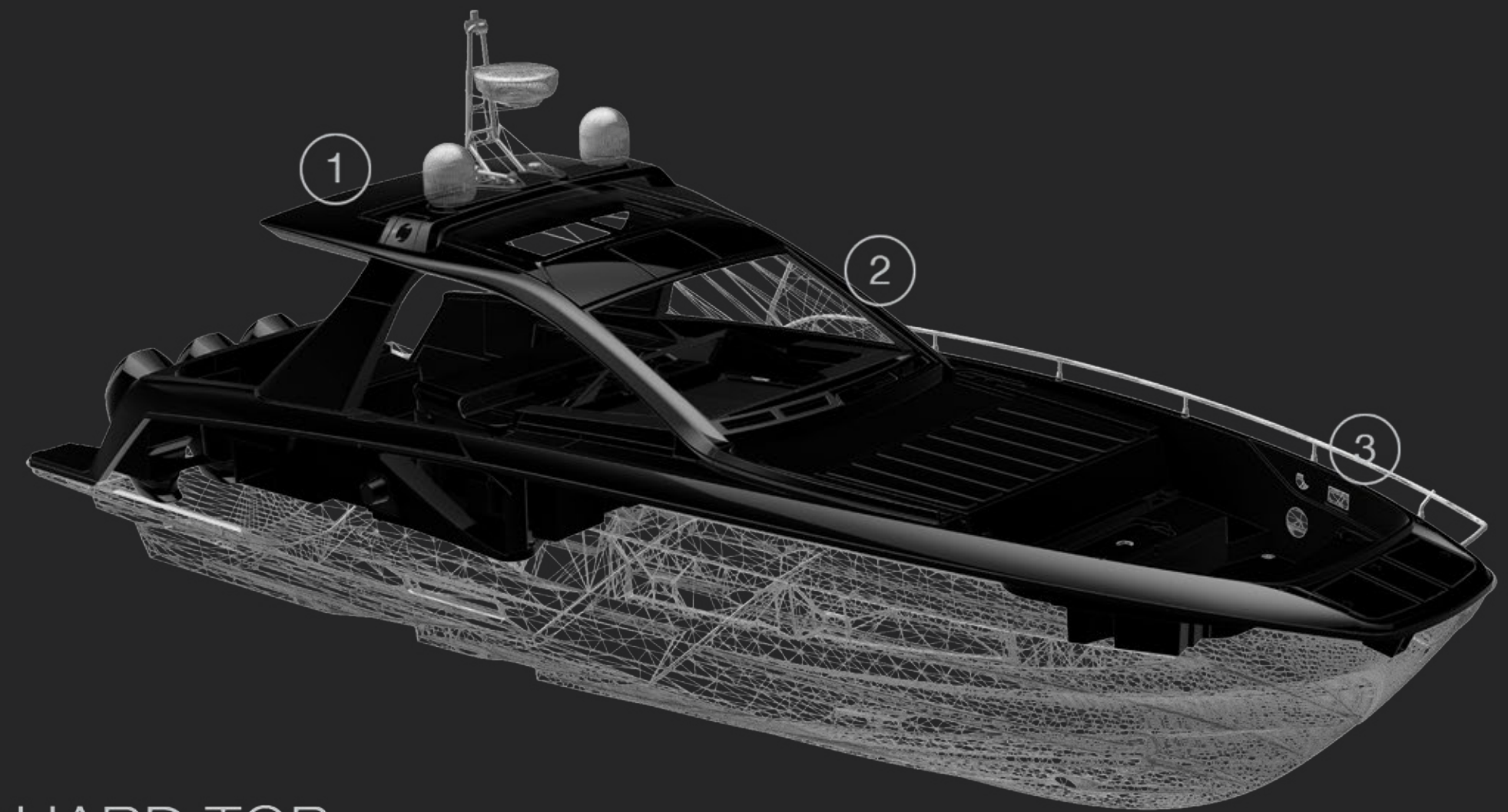
The high-performance patented Stepped 'V' Ventilated Tunnel (SVVT) was developed by Michael Peters and incorporates a classic deep 'V' hull with two transverse steps and a central tunnel aft. It is this latter feature that sets it apart from other current stepped deep 'V's, with its shallow aft central tunnel increasing the longitudinal stability of the boat in high speed turns and adverse situations.

The use of the SVVT hull on the Verve 42 represents the merging of cutting-edge hull forms with advanced outboard engine power and avant-garde concept design and styling. The combination of technologies culminates in a boat that boasts unmatched performance, manoeuvrability and speed in its class and represents the largest and grandest SVVT pleasure boat available on the market.



# CARBON-TECH GENERATION

Azimut's pioneering use of carbon fiber lamination goes beyond pure performance. The Carbon Tech Generation offers expanded volumes on board, while maintaining excellent dynamic stability and perfect handling. Preserving the yacht's low center of gravity, the carbon fiber was focused on the upper parts of the yacht, lightening the laminated components by up to 30% and reducing the natural roll momentum up to 15%.



- ① HARD TOP
- ② SUPERSTRUCTURE
- ② DECK



# TRIPLE OUTBOARD PROPULSION

The Verve 42 can reach a top speed of 45 knots and cruises at 33 knots with three Mercury outboard engines, offered in 400hp and 450hp variants. It's the ideal propulsion for dynamic and sporty yachts, such as the new Verve 42, with an unbeatable weight-to-power ratio. The pilot feels effortlessly in command with smooth handling and responsive controls. Low displacement is another important design objective accomplished thanks to this advanced solution.





03

# VERVE 42 SPEC SHEET

# GENERAL CHARACTERISTICS

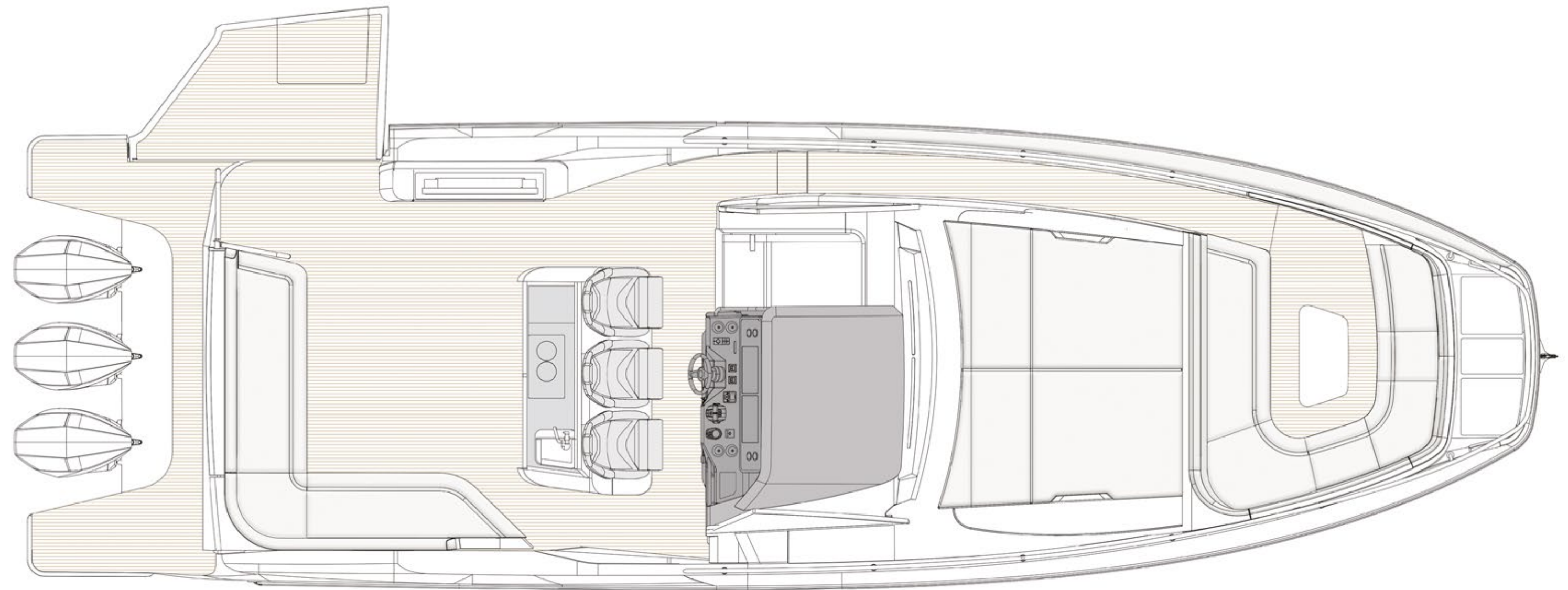
LENGTH OVERALL	12,9 m	42' 4"
BEAM MAX	3,94 m	12' 11"
DRAFT	1,20 m	3' 11"
DISPLACEMENT	14 t	30865 lb
ENGINES	3 x 450 hp - 450R Mercury	
MAXIMUM SPEED	45 kn	
CRUISING SPEED	33 kn	
KEEL	Stepped planing hull	
FUEL CAPACITY	1750 l	462 US Gal
WATER CAPACITY	250 l	66 US Gal
CABINS	1	
BERTHS	2 + 2	
HEAD COMPARTMENTS	1	
BUILDING MATERIAL	Carbon fibre + GRP	
EXTERIOR DESIGNER	Francesco Struglia	
INTERIOR DESIGNER	Francesco Struglia	
HULL DESIGNER	Michael Peters	
BUILDER	Azimut Yachts	
CERTIFICATIONS	CE A; NMMA	

Last updated 08.2022  
Please consult your dealer for the latest specifications.

UNI ISO 8666  
The performance described applies to a vessel with standard configuration (standard equipment installed) and a clean hull, propellers, and rudder. It is also noted that the performance described was recorded under favourable sea and wind conditions (Beaufort scale index 1, Douglas scale index 1); different and worse sea conditions could significantly impact performance.

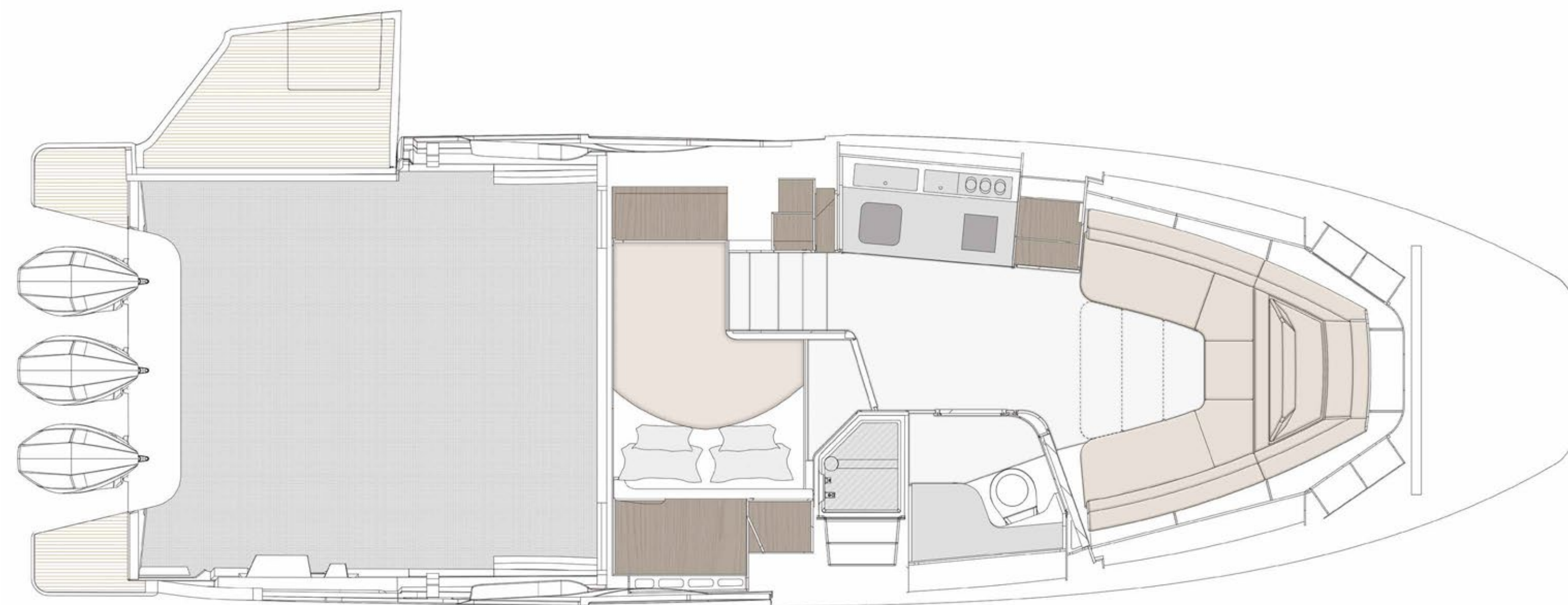
CE MARK  
Given the continual evolution of technology, Azimut | Benetti S.p.A reserves the right to modify the technical specifications on its vessels at any time and without prior notice.

# ABOVE VIEW





# MAIN DECK





04

# THE VERVE SERIES

# THE AZIMUT WEEKENDER

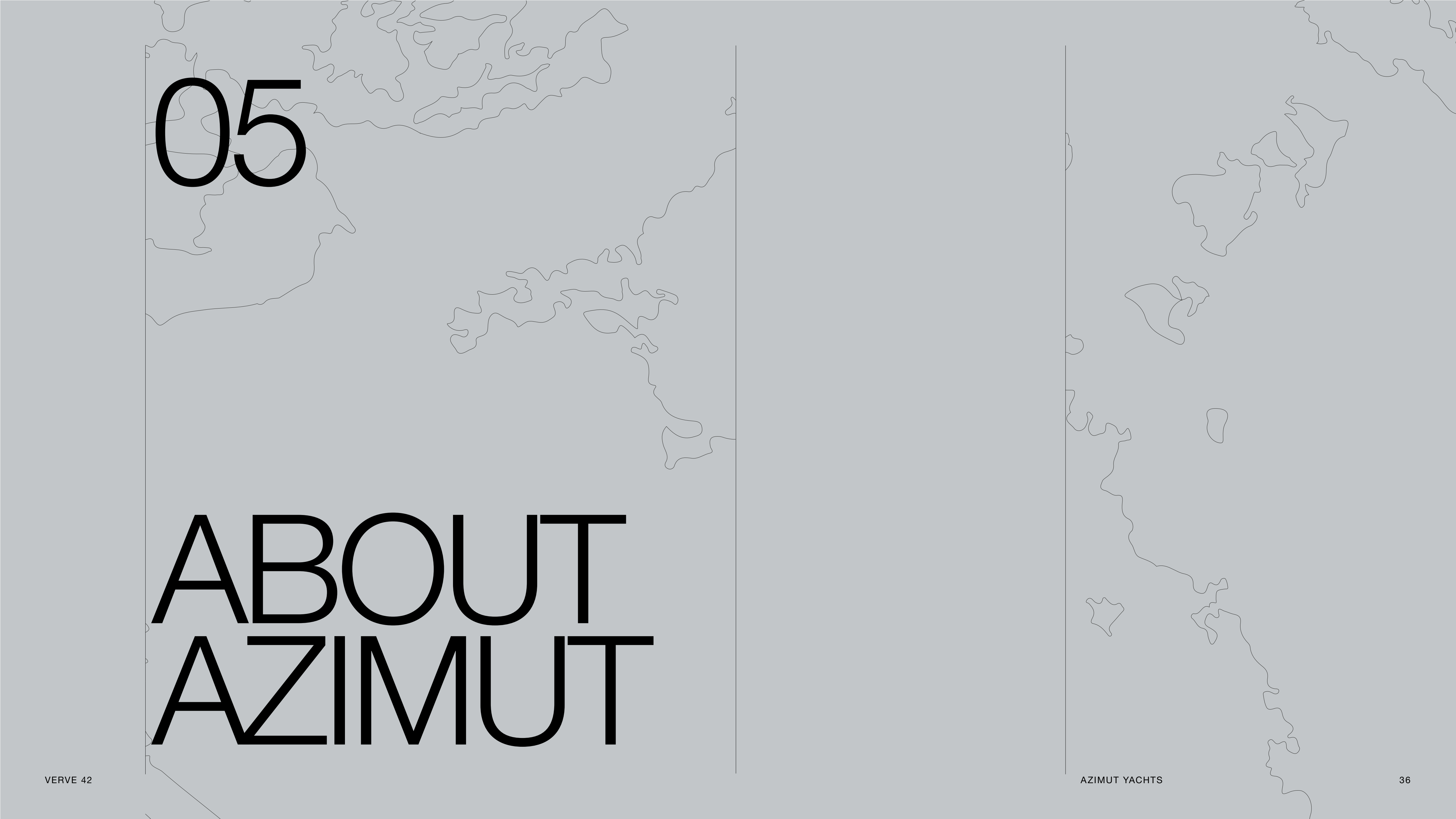
Designed for adrenaline enthusiasts with an appetite for deluxe living, the Azimut Verve Series embodies a new boating sensation, defying the traditional take on American style outboard-powered yachts and Italian cabin cruisers to launch a one-of-a-kind segment: the weekender. Uninhibited and freedom-loving, its fierce aptitude for performance unexpectedly combines with luxurious onboard ambiances, setting aside all compromise for a thrilling yet elevated nautical experience.

Allow yourself to have it all.

42  
47







05

# ABOUT AZIMUT





# A FAMILY-MADE COMPANY CULTURE

An immense and personal passion for the sea. A clear and forward-facing attitude. A strong and relentless work ethic. Since 1969, Paolo Vitelli, the creative visionary founder and businessman behind Azimut, has been set on challenging the industry's status quo with a daring desire: bring to life an unexpected nautical experience, through yachts built to combine alluring aesthetics with construction expertise and impeccable technology.

An audacious mindset that has, over time, surprised and captivated the yachting sector, transforming Azimut into a bold and recognizable benchmark, and laying the foundation for the birth of the largest megayacht builder in the world, the Azimut | Benetti Group.

The international and management-based standing of the company today, is deeply nourished by the solid and memorable family heritage that has distinguished it from the beginning. A historically pioneering vision that enables it to continue thriving day after day, through ingenious inventions and long-term goals that look to the future with Paolo's daughter, Giovanna Vitelli.



# A SUSTAINABLE VISION TODAY, FOR TOMORROW

An avant-garde vision and a strong emotional appeal have shaped the history of Azimut as a leader in the field of nautical innovation as well as its commitment to the creation of a sustainable-oriented and attentive company culture today.

An ambitious and personal touch that has allowed Azimut to grow and evolve on both levels, embracing the challenge of a future nurtured by an eco-conscious approach to boat construction and by an authentic focus and responsibility on human well-being.







# OUR ♻️ ECO-YACHTING PHILOSOPHY

The Azimut I Benetti Group has made tangible investments to guide the Technical as well as the R&D departments toward the construction of yachts with a diminished environmental impact. Its main areas of intervention have focused on significantly lowering fuel consumption and CO2 emissions through the development of highly efficient hull designs, innovative propulsion systems and an extensive use of carbon fiber to decrease yacht weight.





# A SAFE AND HEALTHY WORK ENVIRONMENT

The forerunning shipyard of Avigliana was the first of the company's Italian shipyards to obtain the ISO 45001 certification in 2011, attesting its rigorous abidance to all occupational health and safety requirements. Recognized as the most technologically-advanced shipyard in Europe, it has also led the nautical sector revolution in terms of being among the earliest adopters of the vacuum infusion process to drive resin into a laminate, avoiding styrene emissions and therefore guaranteeing its precious workers a healthier setting.

As of 2013, all the other Italian production sites have adapted to meet the necessary requirements to obtain the ISO 45001 certification.







# A GLOBALLY-CONNECTED DEALER AND SERVICE NETWORK

---

5 SHIPYARDS

---

6 DIRECT OFFICES

---

138 OFFICIAL DEALERS

---

80 COUNTRIES

---

The highly widespread commercial network put in place by Azimut Yachts, allows the company to offer a continuous presence to its ship owners, concretely curating their demands by meeting their most specific needs.

[Find your Dealer →](#)





# THE LARGEST PRIVATE GROUP IN THE YACHTING WORLD

Azimut is part of the Azimut | Benetti Group, the biggest private player and shipbuilder in the nautical sector today. The Vitelli family, the founder and majority shareholder of the company, has been leading the way for over fifty years now, continuing to innovate through the Group's main yacht brands, Azimut and Benetti, while developing a variety of service brands to cater to the different demands of ship owners worldwide.





# OUR SHIPYARDS MAKE US PROUD

Avigliana — Italy

HQ / SHIPYARD

Savona — Italy

DELIVERY CENTRE

Viareggio — Italy

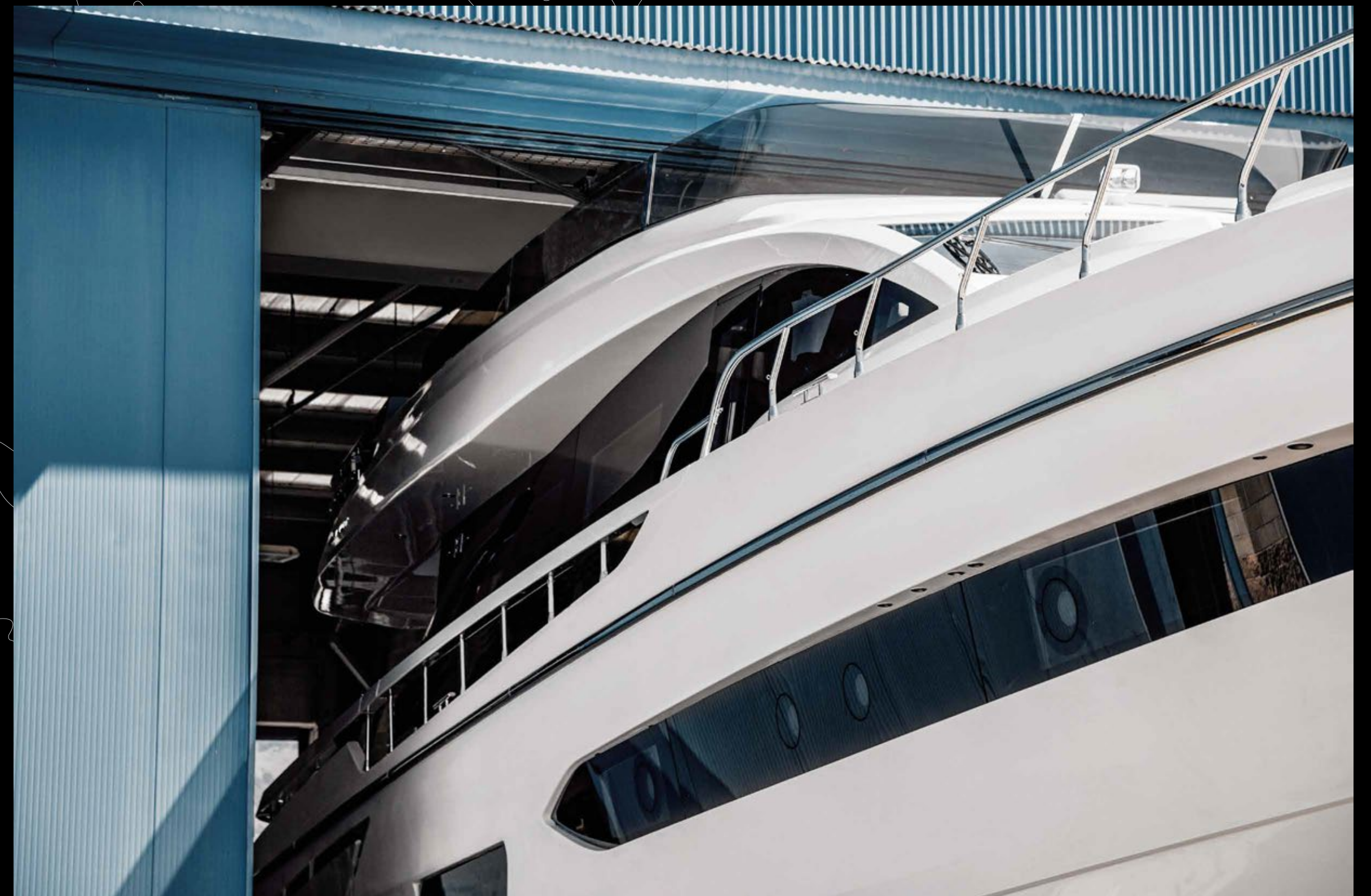
SHIPYARD / STYLING LOUNGE

Fano — Italy

SHIPYARD

Itajaí — Brazil

SHIPYARD







CONCEPT & DESIGN: APART  
PHOTOS: ALESSANDRO GUERRIERI

AZIMUT YACHTS THANKS: APR LUXURY LINEN, DEDAR

OFFICIAL PARTNER



GARMIN.

Raymarine



VOLVO  
PENTA

AZIMUT | BENETTI SPA  
VIA MARTIN LUTHER KING, 9  
10051 AVIGLIANA, TORINO  
ITALY

RELEASE 09.22

This brochure in no way constitutes a contract of sale for the boatyard's vessels to any person or company. All information contained herein, including but not limited to technical and performance data, illustrations, and drawings, is non-binding and for purposes of illustration only. The information in this brochure refers to the boatyard's standard motoryacht models available as of the date of publication. Technical and descriptive information is valid only to the extent that it pertains to the specific vessel that is the subject of a purchase. Contract terms are valid only to the extent that they are contained in a contract of sale. This document is based on information available at the time of publication. Despite efforts to ensure the greatest possible accuracy, the information contained herein may fail to cover all details, omit technical or commercial changes that may have been made subsequent to publication, describe features that are not present, and fail to envisage all circumstances that might occur. Any illustrations, photographs, diagrams and examples shown in this brochure are included solely for the purposes of illustrating the text. Due to the different features of each vessel, the boatyard assumes no liability for actual use based on the illustrated applications.



AZIMUT

[AZIMUTYACHTS.COM](http://AZIMUTYACHTS.COM)

